



MRP-L48 rabbit pAb

Cat No.:ES6550

For research use only

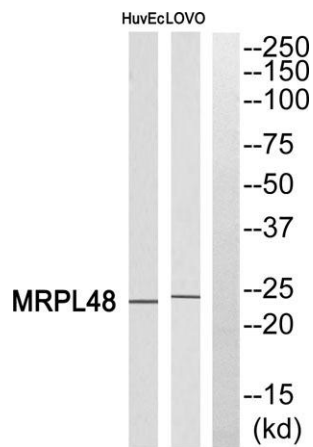
Overview

Product Name	MRP-L48 rabbit pAb
Host species	Rabbit
Applications	WB;IHC;IF;ELISA
Species Cross-Reactivity	Human;Mouse
Recommended dilutions	Western Blot: 1/500 - 1/2000. Immunohistochemistry: 1/100 - 1/300. ELISA: 1/10000. Not yet tested in other applications.
Immunogen	The antiserum was produced against synthesized peptide derived from human MRPL48. AA range:161-210
Specificity	MRP-L48 Polyclonal Antibody detects endogenous levels of MRP-L48 protein.
Formulation	Liquid in PBS containing 50% glycerol, 0.5% BSA and 0.02% sodium azide.
Storage	Store at -20°C. Avoid repeated freeze-thaw cycles.
Protein Name	39S ribosomal protein L48 mitochondrial
Gene Name	MRPL48
Cellular localization	Mitochondrion .
Purification	The antibody was affinity-purified from rabbit antiserum by affinity-chromatography using epitope-specific immunogen.
Clonality	Polyclonal
Concentration	1 mg/ml
Observed band	23kD
Human Gene ID	51642
Human Swiss-Prot Number	Q96GC5
Alternative Names	MRPL48; CGI-118; HSPC290; 39S ribosomal protein L48; mitochondrial; L48mt; MRP-L48
Background	Mammalian mitochondrial ribosomal proteins are encoded by nuclear genes and help in protein synthesis within the mitochondrion. Mitochondrial ribosomes (mitoribosomes) consist of a small 28S subunit and a large 39S subunit. They have an

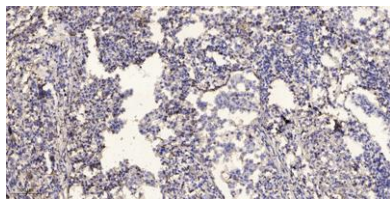




estimated 75% protein to rRNA composition compared to prokaryotic ribosomes, where this ratio is reversed. Another difference between mammalian mitoribosomes and prokaryotic ribosomes is that the latter contain a 5S rRNA. Among different species, the proteins comprising the mitoribosome differ greatly in sequence, and sometimes in biochemical properties, which prevents easy recognition by sequence homology. This gene encodes a 39S subunit protein. A pseudogene corresponding to this gene is found on chromosome 6p. Several transcript variants, some protein-coding and some non-protein coding, have been found for this gene. [provided by RefSeq, Jan 2016],



Western blot analysis of MRPL48 Antibody. The lane on the right is blocked with the MRPL48 peptide.



Immunohistochemical analysis of paraffin-embedded human Squamous cell carcinoma of lung. 1, Antibody was diluted at 1:200(4° overnight). 2, Tris-EDTA,pH9.0 was used for antigen retrieval. 3,Secondary antibody was diluted at 1:200(room temperature, 45min).

