



HMP19 rabbit pAb

Cat No.:ES6549

For research use only

Overview

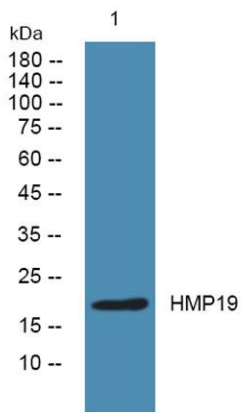
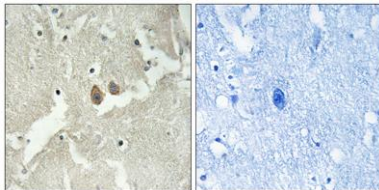
Product Name	HMP19 rabbit pAb
Host species	Rabbit
Applications	IHC;IF;WB;ELISA
Species Cross-Reactivity	Human;Mouse
Recommended dilutions	WB 1:500-2000 Immunohistochemistry: 1/100 - 1/300. ELISA: 1/20000. Not yet tested in other applications.
Immunogen	The antiserum was produced against synthesized peptide derived from human NSG2. AA range:33-82
Specificity	HMP19 Polyclonal Antibody detects endogenous levels of HMP19 protein.
Formulation	Liquid in PBS containing 50% glycerol, 0.5% BSA and 0.02% sodium azide.
Storage	Store at -20°C. Avoid repeated freeze-thaw cycles.
Protein Name	Neuron-specific protein family member 2
Gene Name	NSG2
Cellular localization	Membrane ; Single-pass type II membrane protein . Golgi apparatus, trans-Golgi network membrane . Cell projection, dendrite . Endosome membrane . Early endosome membrane . Late endosome membrane . Lysosome lumen . Cytoplasmic vesicle membrane . Golgi appa
Purification	The antibody was affinity-purified from rabbit antiserum by affinity-chromatography using epitope-specific immunogen.
Clonality	Polyclonal
Concentration	1 mg/ml
Observed band	19kD
Human Gene ID	51617
Human Swiss-Prot Number	Q9Y328
Alternative Names	NSG2; Neuron-specific protein family member 2; Protein p19; Hmp19
Background	similarity:Belongs to the NSG family.,subcellular





location: Mainly Golgi stack, but also found in small vacuolar organelles and multivesicular bodies.,

Immunohistochemistry analysis of paraffin-embedded human brain tissue, using NSG2 Antibody. The picture on the right is blocked with the synthesized peptide.



Western blot analysis of lysates from DU145 cells, primary antibody was diluted at 1:1000, 4° over night

