



# MRP-S2 rabbit pAb

Cat No.:ES6498

For research use only

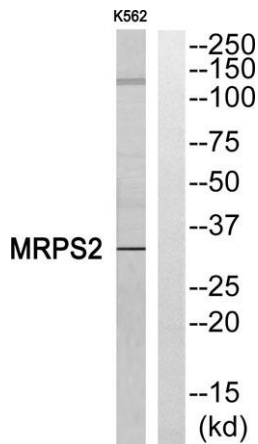
## Overview

<b>Product Name</b>	MRP-S2 rabbit pAb
<b>Host species</b>	Rabbit
<b>Applications</b>	WB;IHC;IF;ELISA
<b>Species Cross-Reactivity</b>	Human;Rat;Mouse;
<b>Recommended dilutions</b>	Western Blot: 1/500 - 1/2000. Immunohistochemistry: 1/100 - 1/300. ELISA: 1/5000. Not yet tested in other applications.
<b>Immunogen</b>	The antiserum was produced against synthesized peptide derived from human MRPS2. AA range:236-285
<b>Specificity</b>	MRP-S2 Polyclonal Antibody detects endogenous levels of MRP-S2 protein.
<b>Formulation</b>	Liquid in PBS containing 50% glycerol, 0.5% BSA and 0.02% sodium azide.
<b>Storage</b>	Store at -20°C. Avoid repeated freeze-thaw cycles.
<b>Protein Name</b>	28S ribosomal protein S2 mitochondrial
<b>Gene Name</b>	MRPS2
<b>Cellular localization</b>	Mitochondrion .
<b>Purification</b>	The antibody was affinity-purified from rabbit antiserum by affinity-chromatography using epitope-specific immunogen.
<b>Clonality</b>	Polyclonal
<b>Concentration</b>	1 mg/ml
<b>Observed band</b>	33kD
<b>Human Gene ID</b>	51116
<b>Human Swiss-Prot Number</b>	Q9Y399
<b>Alternative Names</b>	MRPS2; CGI-91; 28S ribosomal protein S2; mitochondrial; MRP-S2; S2mt
<b>Background</b>	Mammalian mitochondrial ribosomal proteins are encoded by nuclear genes and help in protein synthesis within the mitochondrion. Mitochondrial ribosomes (mitoribosomes) consist of a small 28S subunit and a large 39S subunit. They have an



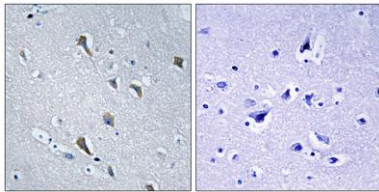


estimated 75% protein to rRNA composition compared to prokaryotic ribosomes, where this ratio is reversed. Another difference between mammalian mitoribosomes and prokaryotic ribosomes is that the latter contain a 5S rRNA. Among different species, the proteins comprising the mitoribosome differ greatly in sequence, and sometimes in biochemical properties, which prevents easy recognition by sequence homology. This gene encodes a 28S subunit protein that belongs to the ribosomal protein S2 family. Alternatively spliced transcript variants have been observed for this gene. [provided by RefSeq, May 2012],



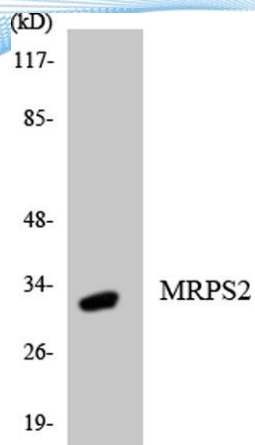
Western blot analysis of MRPS2 Antibody. The lane on the right is blocked with the MRPS2 peptide.

Immunohistochemistry analysis of paraffin-embedded human brain, using MRPS2 Antibody. The lane on the right is blocked with the MRPS2 peptide.





**ELK Biotechnology**



Western blot analysis of the lysates from HepG2 cells using MRPS2 antibody.



+86-27-59760950

[ELKbio@ELKbiotech.com](mailto:ELKbio@ELKbiotech.com)

[www.elkbiotech.com](http://www.elkbiotech.com)

23-2, No.388 Gaoxin 2nd Road,Wuhan East Lake Hi-tech Development Zone, Hubei , P.R.C