



MRP-S18C rabbit pAb

Cat No.:ES6493

For research use only

Overview

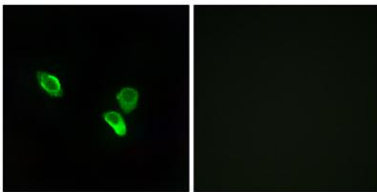
Product Name	MRP-S18C rabbit pAb
Host species	Rabbit
Applications	WB;IHC;IF;ELISA
Species Cross-Reactivity	Human;Mouse
Recommended dilutions	Western Blot: 1/500 - 1/2000. Immunohistochemistry: 1/100 - 1/300. Immunofluorescence: 1/200 - 1/1000. ELISA: 1/40000. Not yet tested in other applications.
Immunogen	The antiserum was produced against synthesized peptide derived from human MRPS18C. AA range:71-120
Specificity	MRP-S18C Polyclonal Antibody detects endogenous levels of MRP-S18C protein.
Formulation	Liquid in PBS containing 50% glycerol, 0.5% BSA and 0.02% sodium azide.
Storage	Store at -20°C. Avoid repeated freeze-thaw cycles.
Protein Name	28S ribosomal protein S18c mitochondrial
Gene Name	MRPS18C
Cellular localization	Mitochondrion .
Purification	The antibody was affinity-purified from rabbit antiserum by affinity-chromatography using epitope-specific immunogen.
Clonality	Polyclonal
Concentration	1 mg/ml
Observed band	16kD
Human Gene ID	51023
Human Swiss-Prot Number	Q9Y3D5
Alternative Names	MRPS18C; CGI-134; 28S ribosomal protein S18c; mitochondrial; MRP-S18-c; Mrps18-c; S18mt-c; 28S ribosomal protein S18-1, mitochondrial; MRP-S18-1
Background	Mammalian mitochondrial ribosomal proteins are encoded by nuclear genes and help in protein synthesis within the mitochondrion. Mitochondrial



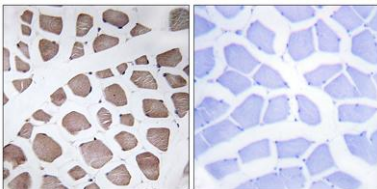


ribosomes (mitoribosomes) consist of a small 28S subunit and a large 39S subunit. They have an estimated 75% protein to rRNA composition compared to prokaryotic ribosomes, where this ratio is reversed. Another difference between mammalian mitoribosomes and prokaryotic ribosomes is that the latter contain a 5S rRNA. Among different species, the proteins comprising the mitoribosome differ greatly in sequence, and sometimes in biochemical properties, which prevents easy recognition by sequence homology. This gene encodes a 28S subunit protein that belongs to the ribosomal protein S18P family. The encoded protein is one of three that has significant sequence similarity to bacterial S18 proteins. The primary sequences of the three human mitochondria

Immunofluorescence analysis of MCF7 cells, using MRPS18C Antibody. The picture on the right is blocked with the synthesized peptide.

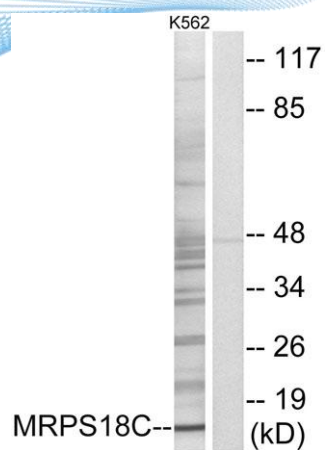


Immunohistochemistry analysis of paraffin-embedded human skeletal muscle tissue, using MRPS18C Antibody. The picture on the right is blocked with the synthesized peptide.

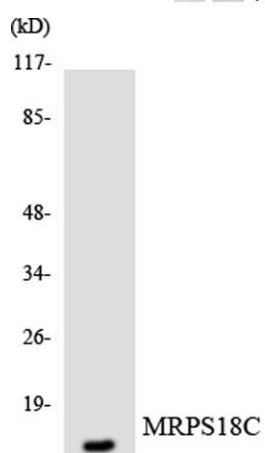




ELK Biotechnology



Western blot analysis of lysates from K562 cells, using MRPS18C Antibody. The lane on the right is blocked with the synthesized peptide.



Western blot analysis of the lysates from HepG2 cells using MRPS18C antibody.



+86-27-59760950

ELKbio@ELKbiotech.com

www.elkbiotech.com

23-2, No.388 Gaoxin 2nd Road, Wuhan East Lake Hi-tech Development Zone, Hubei, P.R.C