



# Sclerostin rabbit pAb

Cat No.:ES6491

For research use only

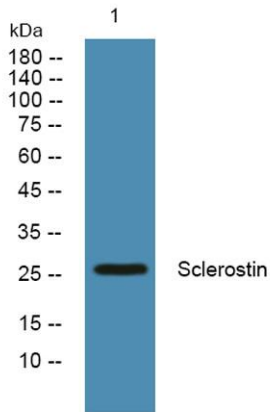
## Overview

|                                 |   |
|---------------------------------|---|
| <b>Product Name</b>             | Sclerostin rabbit pAb   |
| <b>Host species</b>             | Rabbit  |
| <b>Applications</b>             | WB;ELISA;IHC  |
| <b>Species Cross-Reactivity</b> | Human;Rat;Mouse;  |
| <b>Recommended dilutions</b>    | WB 1:500-2000;IHC-p 1:50-300; ELISA 2000-20000  |
| <b>Immunogen</b>                | Synthesized peptide derived from Sclerostin . at AA range: 130-210  |
| <b>Specificity</b>              | Sclerostin Polyclonal Antibody detects endogenous levels of Sclerostin protein.   |
| <b>Formulation</b>              | Liquid in PBS containing 50% glycerol, 0.5% BSA and 0.02% sodium azide.   |
| <b>Storage</b>                  | Store at -20°C. Avoid repeated freeze-thaw cycles.  |
| <b>Protein Name</b>             | Sclerostin  |
| <b>Gene Name</b>                | SOST  |
| <b>Cellular localization</b>    | Secreted, extracellular space, extracellular matrix .   |
| <b>Purification</b>             | The antibody was affinity-purified from rabbit antiserum by affinity-chromatography using epitope-specific immunogen.   |
| <b>Clonality</b>                | Polyclonal  |
| <b>Concentration</b>            | 1 mg/ml   |
| <b>Observed band</b>            | 26kD  |
| <b>Human Gene ID</b>            | 50964   |
| <b>Human Swiss-Prot Number</b>  | Q9BQB4  |
| <b>Alternative Names</b>        | SOST; Sclerostin  |
| <b>Background</b>               | Sclerostin is a secreted glycoprotein with a C-terminal cysteine knot-like (CTCK) domain and sequence similarity to the DAN (differential screening-selected gene aberrative in neuroblastoma) family of bone morphogenetic protein (BMP) antagonists. Loss-of-function mutations in this gene are associated with an autosomal-recessive disorder, sclerosteosis, which causes progressive bone overgrowth. A deletion |

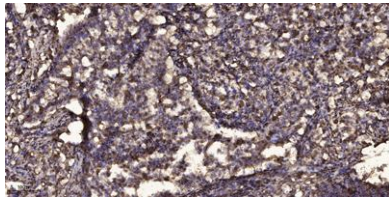




downstream of this gene, which causes reduced sclerostin expression, is associated with a milder form of the disorder called van Buchem disease. [provided by RefSeq, Jul 2008],



Western blot analysis of lysates from Jarkat cells, primary antibody was diluted at 1:1000, 4° over night



Immunohistochemical analysis of paraffin-embedded human Squamous cell carcinoma of lung. 1, Antibody was diluted at 1:200(4° overnight). 2, Tris-EDTA,pH9.0 was used for antigen retrieval. 3,Secondary antibody was diluted at 1:200(room temperature, 45min).

