



# T2R14 rabbit pAb

Cat No.:ES6487

For research use only

## Overview

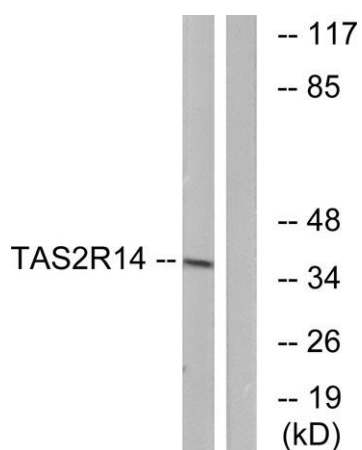
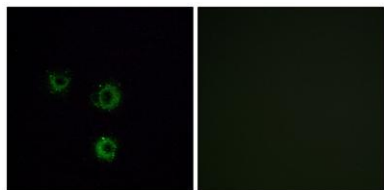
|                                 |  |
|---------------------------------|--|
| <b>Product Name</b>             | T2R14 rabbit pAb   |
| <b>Host species</b>             | Rabbit   |
| <b>Applications</b>             | WB;IHC   |
| <b>Species Cross-Reactivity</b> | Human;Rat;Mouse;   |
| <b>Recommended dilutions</b>    | WB 1:500-2000;IHC-p 1:50-300   |
| <b>Immunogen</b>                | The antiserum was produced against synthesized peptide derived from human TAS2R14. AA range:229-278  |
| <b>Specificity</b>              | T2R14 Polyclonal Antibody detects endogenous levels of T2R14 protein.  |
| <b>Formulation</b>              | Liquid in PBS containing 50% glycerol, 0.5% BSA and 0.02% sodium azide.  |
| <b>Storage</b>                  | Store at -20°C. Avoid repeated freeze-thaw cycles.   |
| <b>Protein Name</b>             | Taste receptor type 2 member 14  |
| <b>Gene Name</b>                | TAS2R14  |
| <b>Cellular localization</b>    | Membrane; Multi-pass membrane protein.   |
| <b>Purification</b>             | The antibody was affinity-purified from rabbit antiserum by affinity-chromatography using epitope-specific immunogen.  |
| <b>Clonality</b>                | Polyclonal   |
| <b>Concentration</b>            | 1 mg/ml  |
| <b>Observed band</b>            | 38kD   |
| <b>Human Gene ID</b>            | 50840  |
| <b>Human Swiss-Prot Number</b>  | Q9NYV8   |
| <b>Alternative Names</b>        | TAS2R14; Taste receptor type 2 member 14; T2R14; Taste receptor family B member 1; TRB1  |
| <b>Background</b>               | This gene product belongs to the family of candidate taste receptors that are members of the G-protein-coupled receptor superfamily. These proteins are specifically expressed in the taste receptor cells of the tongue and palate epithelia. They are organized in the genome in clusters and are genetically linked to loci that influence bitter |



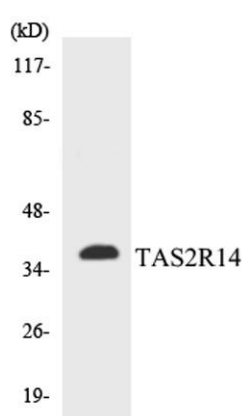


perception in mice and humans. In functional expression studies, they respond to bitter tastants. This gene maps to the taste receptor gene cluster on chromosome 12p13. [provided by RefSeq, Jul 2008],

Immunofluorescence analysis of MCF7 cells, using TAS2R14 Antibody. The picture on the right is blocked with the synthesized peptide.



Western blot analysis of lysates from MCF-7 cells, using TAS2R14 Antibody. The lane on the right is blocked with the synthesized peptide.

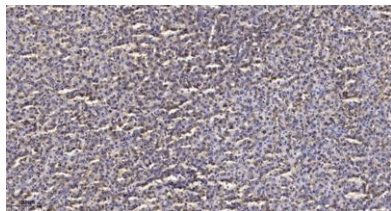


Western blot analysis of the lysates from COLO205 cells using TAS2R14 antibody.





**ELK Biotechnology**



Immunohistochemical analysis of paraffin-embedded human liver cancer. 1, Antibody was diluted at 1:200(4° overnight). 2, Tris-EDTA,pH9.0 was used for antigen retrieval. 3,Secondary antibody was diluted at 1:200(room temperature, 45min).



+86-27-59760950

[ELKbio@ELKbiotech.com](mailto:ELKbio@ELKbiotech.com)

[www.elkbiotech.com](http://www.elkbiotech.com)

23-2, No.388 Gaoxin 2nd Road,Wuhan East Lake Hi-tech Development Zone, Hubei , P.R.C