



NPY rabbit pAb

Cat No.:ES6406

For research use only

Overview

Product Name	NPY rabbit pAb
Host species	Rabbit
Applications	WB;IHC;IF;ELISA
Species Cross-Reactivity	Human;Mouse;Rat
Recommended dilutions	IHC-p 1:100-500, WB 1:500-2000,ELISA 1:5000-20000
Immunogen	The antiserum was produced against synthesized peptide derived from human NPY. AA range:45-94
Specificity	NPY Polyclonal Antibody detects endogenous levels of NPY protein.
Formulation	Liquid in PBS containing 50% glycerol, 0.5% BSA and 0.02% sodium azide.
Storage	Store at -20°C. Avoid repeated freeze-thaw cycles.
Protein Name	Pro-neuropeptide Y
Gene Name	NPY
Cellular localization	Secreted. Cytoplasmic vesicle, secretory vesicle, neuronal dense core vesicle .
Purification	The antibody was affinity-purified from rabbit antiserum by affinity-chromatography using epitope-specific immunogen.
Clonality	Polyclonal
Concentration	1 mg/ml
Observed band	
Human Gene ID	4852
Human Swiss-Prot Number	P01303
Alternative Names	NPY; Pro-neuropeptide Y
Background	This gene encodes a neuropeptide that is widely expressed in the central nervous system and influences many physiological processes, including cortical excitability, stress response, food intake, circadian rhythms, and cardiovascular function. The neuropeptide functions through G protein-coupled receptors to inhibit adenylyl cyclase, activate

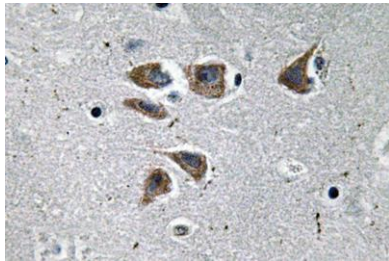




ELK Biotechnology

mitogen-activated protein kinase (MAPK), regulate intracellular calcium levels, and activate potassium channels. A polymorphism in this gene resulting in a change of leucine 7 to proline in the signal peptide is associated with elevated cholesterol levels, higher alcohol consumption, and may be a risk factor for various metabolic and cardiovascular diseases. The protein also exhibits antimicrobial activity against bacteria and fungi. [provided by RefSeq, Oct 2014],

Immunohistochemistry analysis of NPY antibody in paraffin-embedded human brain tissue.



+86-27-59760950

ELKbio@ELKbiotech.com

www.elkbiotech.com

23-2, No.388 Gaoxin 2nd Road, Wuhan East Lake Hi-tech Development Zone, Hubei, P.R.C