



CNOT2 (phospho Ser101) rabbit pAb

Cat No.:ES6403

For research use only

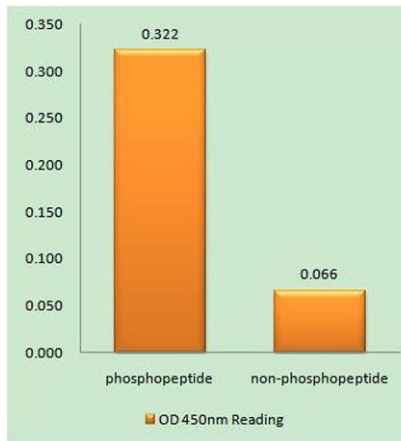
Overview

| | |
|---------------------------------|---|
| Product Name | CNOT2 (phospho Ser101) rabbit pAb |
| Host species | Rabbit |
| Applications | IHC;IF;ELISA |
| Species Cross-Reactivity | Human;Mouse;Rat |
| Recommended dilutions | Immunohistochemistry: 1/100 - 1/300. ELISA: 1/10000. Not yet tested in other applications. |
| Immunogen | The antiserum was produced against synthesized peptide derived from human CNOT2 around the phosphorylation site of Ser101. AA range:67-116 |
| Specificity | Phospho-CNOT2 (S101) Polyclonal Antibody detects endogenous levels of CNOT2 protein only when phosphorylated at S101. |
| Formulation | Liquid in PBS containing 50% glycerol, 0.5% BSA and 0.02% sodium azide. |
| Storage | Store at -20°C. Avoid repeated freeze-thaw cycles. |
| Protein Name | CCR4-NOT transcription complex subunit 2 |
| Gene Name | CNOT2 |
| Cellular localization | Cytoplasm . Nucleus . |
| Purification | The antibody was affinity-purified from rabbit antiserum by affinity-chromatography using epitope-specific immunogen. |
| Clonality | Polyclonal |
| Concentration | 1 mg/ml |
| Observed band | |
| Human Gene ID | 4848 |
| Human Swiss-Prot Number | Q9NZN8 |
| Alternative Names | CNOT2; CDC36; NOT2; HSPC131; MSTP046; CCR4-NOT transcription complex subunit 2; CCR4-associated factor 2 |
| Background | CCR4-NOT transcription complex subunit 2(CNOT2) Homo sapiens This gene encodes a subunit of the multi-component CCR4-NOT complex. The CCR4-NOT complex regulates mRNA synthesis and |





degradation and is also thought to be involved in mRNA splicing, transport and localization. The encoded protein interacts with histone deacetylases and functions as a repressor of polymerase II transcription. Alternatively spliced transcript variants have been observed for this gene. [provided by RefSeq, Dec 2010],



Enzyme-Linked Immunosorbent Assay (Phospho-ELISA) for Immunogen Phosphopeptide (Phospho-left) and Non-Phosphopeptide (Phospho-right), using CNOT2 (Phospho-Ser101) Antibody

Immunohistochemistry analysis of paraffin-embedded human brain, using CNOT2 (Phospho-Ser101) Antibody. The picture on the right is blocked with the phospho peptide.

