



NM23-H2 rabbit pAb

Cat No.:ES6396

For research use only

Overview

Product Name	NM23-H2 rabbit pAb
Host species	Rabbit
Applications	WB;ELISA
Species Cross-Reactivity	Human;Mouse;Rat
Recommended dilutions	Western Blot: 1/500 - 1/2000. ELISA: 1/5000. Not yet tested in other applications.
Immunogen	The antiserum was produced against synthesized peptide derived from human NM23. AA range:91-140
Specificity	NM23-H2 Polyclonal Antibody detects endogenous levels of NM23-H2 protein.
Formulation	Liquid in PBS containing 50% glycerol, 0.5% BSA and 0.02% sodium azide.
Storage	Store at -20°C. Avoid repeated freeze-thaw cycles.
Protein Name	Nucleoside diphosphate kinase B
Gene Name	NME2
Cellular localization	Cytoplasm . Cell projection, lamellipodium . Cell projection, ruffle . Colocalizes with ITGB1 and ITGB1BP1 at the edge or peripheral ruffles and lamellipodia during the early stages of cell spreading on fibronectin or collagen but not on vitronectin or la
Purification	The antibody was affinity-purified from rabbit antiserum by affinity-chromatography using epitope-specific immunogen.
Clonality	Polyclonal
Concentration	1 mg/ml
Observed band	23kD
Human Gene ID	4831/654364
Human Swiss-Prot Number	P22392
Alternative Names	NME2; NM23B; Nucleoside diphosphate kinase B; NDK B; NDP kinase B; C-myc purine-binding transcription factor PUF; Histidine protein kinase

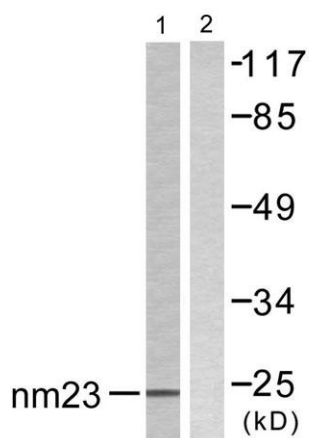




Background

NDKB; nm23-H2

Nucleoside diphosphate kinase (NDK) exists as a hexamer composed of 'A' (encoded by NME1) and 'B' (encoded by this gene) isoforms. Multiple alternatively spliced transcript variants have been found for this gene. Read-through transcription from the neighboring upstream gene (NME1) generates naturally-occurring transcripts (NME1-NME2) that encode a fusion protein comprised of sequence sharing identity with each individual gene product. [provided by RefSeq, Nov 2010],



Western blot analysis of lysates from K562 cells, using NM23 Antibody. The lane on the right is blocked with the synthesized peptide.

