



I κ B- β (phospho Thr19) rabbit pAb

Cat No.:ES6384

For research use only

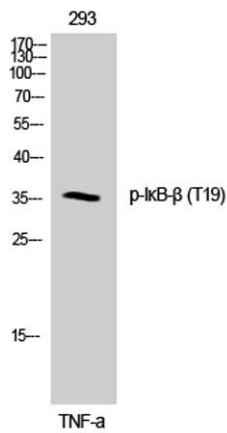
Overview

Product Name	I κ B- β (phospho Thr19) rabbit pAb
Host species	Rabbit
Applications	WB;IHC;IF;ELISA
Species Cross-Reactivity	Human;Rat;Mouse;
Recommended dilutions	Western Blot: 1/500 - 1/2000. Immunohistochemistry: 1/100 - 1/300. ELISA: 1/5000. Not yet tested in other applications.
Immunogen	The antiserum was produced against synthesized peptide derived from human I κ appaB-beta around the phosphorylation site of Thr19. AA range:4-53
Specificity	Phospho-I κ B- β (T19) Polyclonal Antibody detects endogenous levels of I κ B- β protein only when phosphorylated at T19.
Formulation	Liquid in PBS containing 50% glycerol, 0.5% BSA and 0.02% sodium azide.
Storage	Store at -20°C. Avoid repeated freeze-thaw cycles.
Protein Name	NF-kappa-B inhibitor beta
Gene Name	NFKB1B
Cellular localization	Cytoplasm . Nucleus .
Purification	The antibody was affinity-purified from rabbit antiserum by affinity-chromatography using epitope-specific immunogen.
Clonality	Polyclonal
Concentration	1 mg/ml
Observed band	37kD
Human Gene ID	4793
Human Swiss-Prot Number	Q15653
Alternative Names	NFKB1B; IKBB; TRIP9; NF-kappa-B inhibitor beta; NF-kappa-BIB; I-kappa-B-beta; I κ B-B; I κ B-beta; I κ appaBbeta; Thyroid receptor-interacting protein 9; TR-interacting protein 9; TRIP-9
Background	The protein encoded by this gene belongs to the NF-kappa-B inhibitor family, which inhibit



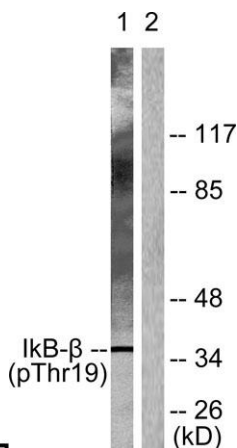
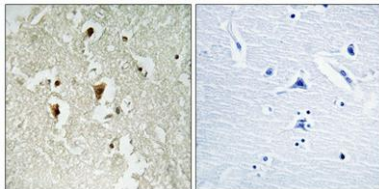


NF-kappa-B by complexing with, and trapping it in the cytoplasm. Phosphorylation of serine residues on these proteins by kinases marks them for destruction via the ubiquitination pathway, thereby allowing activation of the NF-kappa-B, which translocates to the nucleus to function as a transcription factor. Alternatively spliced transcript variants have been found for this gene.[provided by RefSeq, Jul 2011],



Western Blot analysis of 293 cells using Phospho-IkB-β (T19) Polyclonal Antibody

Immunohistochemical analysis of paraffin-embedded Human brain. Antibody was diluted at 1:100(4° overnight). High-pressure and temperature Tris-EDTA,pH8.0 was used for antigen retrieval. Negative control (right) obtained from antibody was pre-absorbed by i



Western blot analysis of lysates from 293 cells treated with TNF-a 20ng/ml 30', using IkappaB-beta (Phospho-Thr19) Antibody. The lane on the right is blocked with the phospho peptide.





ELK Biotechnology



+86-27-59760950

ELKbio@ELKbiotech.com

www.elkbiotech.com

23-2, No.388 Gaoxin 2nd Road,Wuhan East Lake Hi-tech Development Zone, Hubei , P.R.C