



NFATc4 (phospho Ser168/S170) rabbit pAb

Cat No.:ES6370

For research use only

Overview

Product Name	NFATc4 (phospho Ser168/S170) rabbit pAb
Host species	Rabbit
Applications	WB;IHC;IF;ELISA
Species Cross-Reactivity	Human;Mouse
Recommended dilutions	Western Blot: 1/500 - 1/2000. Immunohistochemistry: 1/100 - 1/300. ELISA: 1/5000. Not yet tested in other applications.
Immunogen	The antiserum was produced against synthesized peptide derived from human NFAT3 around the phosphorylation site of Ser168 and Ser170. AA range:136-185
Specificity	Phospho-NFATc4 (S168/S170) Polyclonal Antibody detects endogenous levels of NFATc4 protein only when phosphorylated at S168/S170.
Formulation	Liquid in PBS containing 50% glycerol, 0.5% BSA and 0.02% sodium azide.
Storage	Store at -20°C. Avoid repeated freeze-thaw cycles.
Protein Name	Nuclear factor of activated T-cells cytoplasmic 4
Gene Name	NFATC4
Cellular localization	Cytoplasm, cytosol . Nucleus . When hyperphosphorylated, localizes in the cytosol. When intracellular Ca(2+) levels increase, dephosphorylation by calcineurin/PPP3CA leads to translocation into the nucleus (PubMed:11997522, PubMed:18347059). MAPK7/ERK5 an
Purification	The antibody was affinity-purified from rabbit antiserum by affinity-chromatography using epitope-specific immunogen.
Clonality	Polyclonal
Concentration	1 mg/ml
Observed band	140kD
Human Gene ID	4776
Human Swiss-Prot Number	Q14934



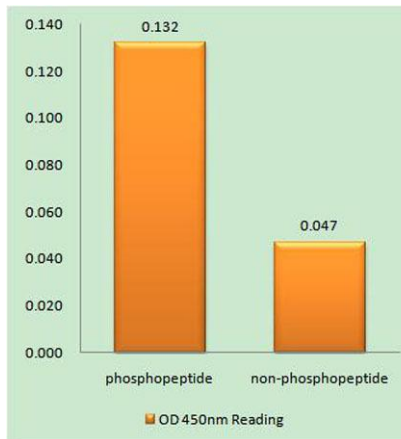


Alternative Names

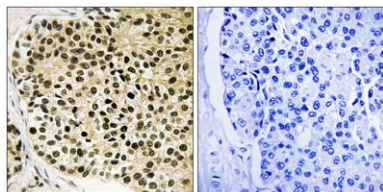
NFATC4; NFAT3; Nuclear factor of activated T-cells; cytoplasmic 4; NF-ATc4; NFATc4; T-cell transcription factor NFAT3; NF-AT3

Background

This gene encodes a member of the nuclear factor of activated T cells (NFAT) protein family. The encoded protein is part of a DNA-binding transcription complex. This complex consists of at least two components: a preexisting cytosolic component that translocates to the nucleus upon T cell receptor stimulation and an inducible nuclear component. NFAT proteins are activated by the calmodulin-dependent phosphatase, calcineurin. The encoded protein plays a role in the inducible expression of cytokine genes in T cells, especially in the induction of interleukin-2 and interleukin-4. Alternative splicing results in multiple transcript variants. [provided by RefSeq, Jan 2014],



Enzyme-Linked Immunosorbent Assay (Phospho-ELISA) for Immunogen Phosphopeptide (Phospho-left) and Non-Phosphopeptide (Phospho-right), using NFAT3 (Phospho-Ser168+Ser170) Antibody

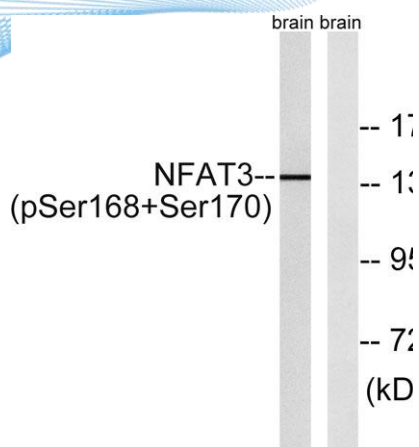


Immunohistochemistry analysis of paraffin-embedded human breast carcinoma, using NFAT3 (Phospho-Ser168+Ser170) Antibody. The picture on the right is blocked with the phospho peptide.





ELK Biotechnology



Western blot analysis of NFAT3 (Phospho-Ser168+Ser170) Antibody. The lane on the right is blocked with the NFAT3 (Phospho-Ser168+Ser170) peptide.



+86-27-59760950

ELKbio@ELKbiotech.com

www.elkbiotech.com

23-2, No.388 Gaoxin 2nd Road, Wuhan East Lake Hi-tech Development Zone, Hubei, P.R.C