



Neuro D (phospho Ser274) rabbit pAb

Cat No.:ES6360

For research use only

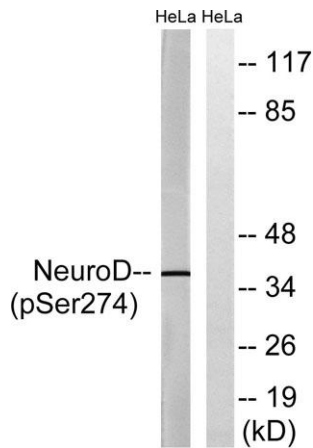
Overview

| | |
|---------------------------------|---|
| Product Name | Neuro D (phospho Ser274) rabbit pAb |
| Host species | Rabbit |
| Applications | WB;IHC |
| Species Cross-Reactivity | Human;Mouse;Rat |
| Recommended dilutions | WB 1:500-2000;IHC-p 1:50-300 |
| Immunogen | The antiserum was produced against synthesized peptide derived from human Neuro D around the phosphorylation site of Ser274. AA range:240-289 |
| Specificity | Phospho-Neuro D (S274) Polyclonal Antibody detects endogenous levels of Neuro D protein only when phosphorylated at S274. |
| Formulation | Liquid in PBS containing 50% glycerol, 0.5% BSA and 0.02% sodium azide. |
| Storage | Store at -20°C. Avoid repeated freeze-thaw cycles. |
| Protein Name | Neurogenic differentiation factor 1 |
| Gene Name | NEUROD1 |
| Cellular localization | Cytoplasm . Nucleus . In pancreatic islet cells, shuttles to the nucleus in response to glucose stimulation (By similarity). Colocalizes with NROB2 in the nucleus. . |
| Purification | The antibody was affinity-purified from rabbit antiserum by affinity-chromatography using epitope-specific immunogen. |
| Clonality | Polyclonal |
| Concentration | 1 mg/ml |
| Observed band | 36kD |
| Human Gene ID | 4760 |
| Human Swiss-Prot Number | Q13562 |
| Alternative Names | NEUROD1; BHLHA3; NEUROD; Neurogenic differentiation factor 1; NeuroD; NeuroD1; Class A basic helix-loop-helix protein 3; bHLHa3 |
| Background | This gene encodes a member of the NeuroD family of basic helix-loop-helix (bHLH) transcription factors. |





The protein forms heterodimers with other bHLH proteins and activates transcription of genes that contain a specific DNA sequence known as the E-box. It regulates expression of the insulin gene, and mutations in this gene result in type II diabetes mellitus. [provided by RefSeq, Jul 2008],



Western blot analysis of lysates from HeLa cells treated with UV 15', using Neuro D (Phospho-Ser274) Antibody. The lane on the right is blocked with the phospho peptide.

Immunohistochemical analysis of paraffin-embedded human Squamous cell carcinoma of lung. 1, Antibody was diluted at 1:200(4° overnight). 2, Tris-EDTA,pH9.0 was used for antigen retrieval. 3,Secondary antibody was diluted at 1:200(room temperature, 45min).

