



# NF-H rabbit pAb

Cat No.:ES6357

For research use only

## Overview

|                                 |   |
|---------------------------------|---|
| <b>Product Name</b>             | NF-H rabbit pAb   |
| <b>Host species</b>             | Rabbit  |
| <b>Applications</b>             | IHC;IF;ELISA  |
| <b>Species Cross-Reactivity</b> | Human;Rat;Mouse;  |
| <b>Recommended dilutions</b>    | Immunohistochemistry: 1/100 - 1/300. ELISA: 1/40000. Not yet tested in other applications.  |
| <b>Immunogen</b>                | The antiserum was produced against synthesized peptide derived from human NF-H. AA range:923-972  |
| <b>Specificity</b>              | NF-H Polyclonal Antibody detects endogenous levels of NF-H protein.   |
| <b>Formulation</b>              | Liquid in PBS containing 50% glycerol, 0.5% BSA and 0.02% sodium azide.   |
| <b>Storage</b>                  | Store at -20°C. Avoid repeated freeze-thaw cycles.  |
| <b>Protein Name</b>             | Neurofilament heavy polypeptide   |
| <b>Gene Name</b>                | NEFH  |
| <b>Cellular localization</b>    | Cytoplasm, cytoskeleton . Cell projection, axon .   |
| <b>Purification</b>             | The antibody was affinity-purified from rabbit antiserum by affinity-chromatography using epitope-specific immunogen.   |
| <b>Clonality</b>                | Polyclonal  |
| <b>Concentration</b>            | 1 mg/ml   |
| <b>Observed band</b>            |   |
| <b>Human Gene ID</b>            | 4744  |
| <b>Human Swiss-Prot Number</b>  | P12036  |
| <b>Alternative Names</b>        | NEFH; KIAA0845; NFH; Neurofilament heavy polypeptide; NF-H; 200 kDa neurofilament protein; Neurofilament triplet H protein  |
| <b>Background</b>               | Neurofilaments are type IV intermediate filament heteropolymers composed of light, medium, and heavy chains. Neurofilaments comprise the axoskeleton and functionally maintain neuronal caliber. They may also play a role in intracellular |

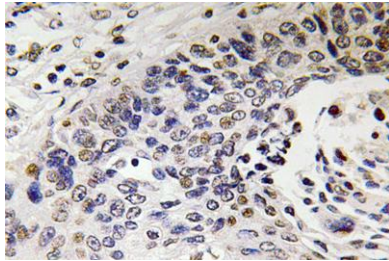




**ELK Biotechnology**

transport to axons and dendrites. This gene encodes the heavy neurofilament protein. This protein is commonly used as a biomarker of neuronal damage and susceptibility to amyotrophic lateral sclerosis (ALS) has been associated with mutations in this gene. [provided by RefSeq, Oct 2008],

Immunohistochemistry analysis of NF-H antibody in paraffin-embedded human lung carcinoma tissue.



+86-27-59760950

[ELKbio@ELKbiotech.com](mailto:ELKbio@ELKbiotech.com)

[www.elkbiotech.com](http://www.elkbiotech.com)

23-2, No.388 Gaoxin 2nd Road, Wuhan East Lake Hi-tech Development Zone, Hubei, P.R.C.