



NF-M rabbit pAb

Cat No.:ES6356

For research use only

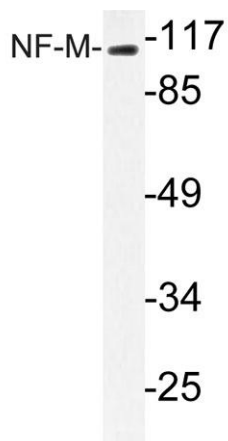
Overview

Product Name	NF-M rabbit pAb
Host species	Rabbit
Applications	WB;ELISA;IHC
Species Cross-Reactivity	Human;Rat;Mouse;
Recommended dilutions	WB 1:500-2000;IHC-p 1:50-300; ELISA 2000-20000
Immunogen	The antiserum was produced against synthesized peptide derived from human NF-M. AA range:542-591
Specificity	NF-M Polyclonal Antibody detects endogenous levels of NF-M protein.
Formulation	Liquid in PBS containing 50% glycerol, 0.5% BSA and 0.02% sodium azide.
Storage	Store at -20°C. Avoid repeated freeze-thaw cycles.
Protein Name	Neurofilament medium polypeptide
Gene Name	NEFM
Cellular localization	Cytoplasm, cytoskeleton . Cell projection, axon .
Purification	The antibody was affinity-purified from rabbit antiserum by affinity-chromatography using epitope-specific immunogen.
Clonality	Polyclonal
Concentration	1 mg/ml
Observed band	110kD
Human Gene ID	4741
Human Swiss-Prot Number	P07197
Alternative Names	NEFM; NEF3; NFM; Neurofilament medium polypeptide; NF-M; 160 kDa neurofilament protein; Neurofilament 3; Neurofilament triplet M protein neurofilament, medium polypeptide(NEFM) Homo sapiens Neurofilaments are type IV intermediate filament heteropolymers composed of light, medium, and heavy chains. Neurofilaments comprise the axoskeleton and functionally maintain neuronal caliber. They may also play a role in
Background	

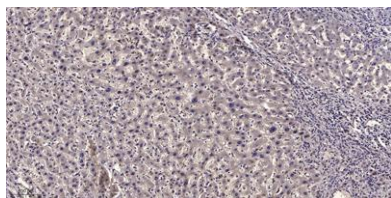




intracellular transport to axons and dendrites. This gene encodes the medium neurofilament protein. This protein is commonly used as a biomarker of neuronal damage. Alternative splicing results in multiple transcript variants encoding distinct isoforms. [provided by RefSeq, Oct 2008],



Western blot analysis of lysate from MCF-7 cells, using NF-M antibody.



Immunohistochemical analysis of paraffin-embedded human liver cancer. 1, Antibody was diluted at 1:200(4° overnight). 2, Tris-EDTA,pH9.0 was used for antigen retrieval. 3,Secondary antibody was diluted at 1:200(room temperature, 45min).

