



B-Myb (phospho Ser577) rabbit pAb

Cat No.:ES6302

For research use only

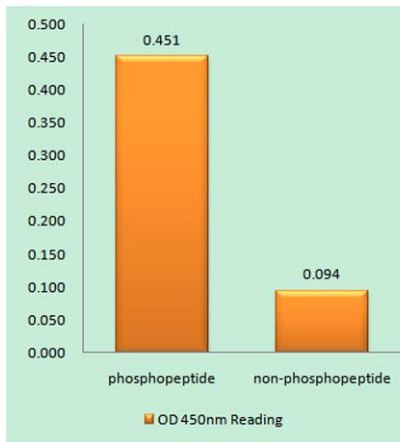
Overview

| | |
|---------------------------------|--|
| Product Name | B-Myb (phospho Ser577) rabbit pAb |
| Host species | Rabbit |
| Applications | WB;IF;ELISA |
| Species Cross-Reactivity | Human;Mouse;Rat |
| Recommended dilutions | Western Blot: 1/500 - 1/2000. Immunofluorescence: 1/200 - 1/1000. ELISA: 1/40000. Not yet tested in other applications. |
| Immunogen | The antiserum was produced against synthesized peptide derived from human B-Myb around the phosphorylation site of Ser577/581. AA range:551-600 |
| Specificity | Phospho-B-Myb (S577) Polyclonal Antibody detects endogenous levels of B-Myb protein only when phosphorylated at S577. |
| Formulation | Liquid in PBS containing 50% glycerol, 0.5% BSA and 0.02% sodium azide. |
| Storage | Store at -20°C. Avoid repeated freeze-thaw cycles. |
| Protein Name | Myb-related protein B |
| Gene Name | MYBL2 |
| Cellular localization | Nucleus. |
| Purification | The antibody was affinity-purified from rabbit antiserum by affinity-chromatography using epitope-specific immunogen. |
| Clonality | Polyclonal |
| Concentration | 1 mg/ml |
| Observed band | 80kD |
| Human Gene ID | 4605 |
| Human Swiss-Prot Number | P10244 |
| Alternative Names | MYBL2; BMYB; Myb-related protein B; B-Myb; Myb-like protein 2 |
| Background | The protein encoded by this gene, a member of the MYB family of transcription factor genes, is a nuclear protein involved in cell cycle progression. The |



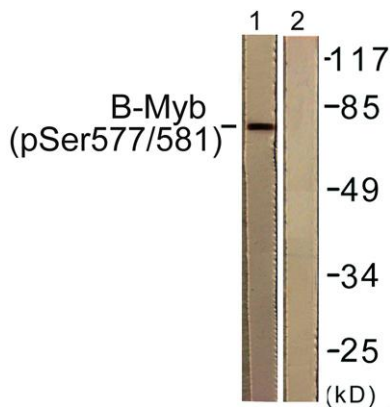
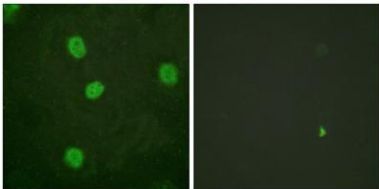


encoded protein is phosphorylated by cyclin A/cyclin-dependent kinase 2 during the S-phase of the cell cycle and possesses both activator and repressor activities. It has been shown to activate the cell division cycle 2, cyclin D1, and insulin-like growth factor-binding protein 5 genes. Two transcript variants encoding different isoforms have been found for this gene. [provided by RefSeq, Jul 2013],



Enzyme-Linked Immunosorbent Assay (Phospho-ELISA) for Immunogen Phosphopeptide (Phospho-left) and Non-Phosphopeptide (Phospho-right), using B-Myb (Phospho-Ser577/581) Antibody

Immunofluorescence analysis of HeLa cells, using B-Myb (Phospho-Ser577/581) Antibody. The picture on the right is blocked with the phospho peptide.



Western blot analysis of lysates from K562 cells, using B-Myb (Phospho-Ser577/581) Antibody. The lane on the right is blocked with the phospho peptide.





ELK Biotechnology



+86-27-59760950

ELKbio@ELKbiotech.com

www.elkbiotech.com

23-2, No.388 Gaoxin 2nd Road,Wuhan East Lake Hi-tech Development Zone, Hubei , P.R.C