



MMP-15 rabbit pAb

Cat No.:ES6264

For research use only

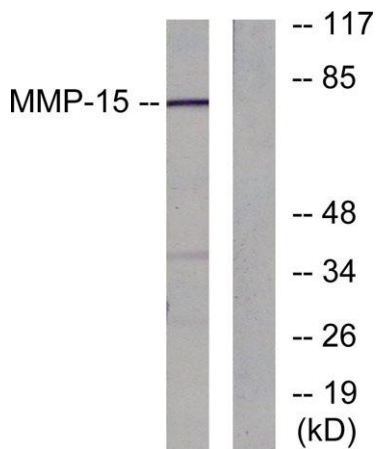
Overview

Product Name	MMP-15 rabbit pAb
Host species	Rabbit
Applications	WB;IHC
Species Cross-Reactivity	Human;Mouse
Recommended dilutions	WB 1:500-2000;IHC-p 1:50-300
Immunogen	The antiserum was produced against synthesized peptide derived from human MMP-15. AA range:611-660
Specificity	MMP-15 Polyclonal Antibody detects endogenous levels of MMP-15 protein.
Formulation	Liquid in PBS containing 50% glycerol, 0.5% BSA and 0.02% sodium azide.
Storage	Store at -20°C. Avoid repeated freeze-thaw cycles.
Protein Name	Matrix metalloproteinase-15
Gene Name	MMP15
Cellular localization	Membrane ; Single-pass type I membrane protein ; Extracellular side .
Purification	The antibody was affinity-purified from rabbit antiserum by affinity-chromatography using epitope-specific immunogen.
Clonality	Polyclonal
Concentration	1 mg/ml
Observed band	80kD
Human Gene ID	4324
Human Swiss-Prot Number	P51511
Alternative Names	MMP15; Matrix metalloproteinase-15; MMP-15; Membrane-type matrix metalloproteinase 2; MT-MMP 2; MTMMP2; Membrane-type-2 matrix metalloproteinase; MT2-MMP; MT2MMP; SMCP-2
Background	This gene encodes a member of the peptidase M10 family and membrane-type subfamily of matrix metalloproteinases (MMPs). Proteins in this family are involved in the breakdown of extracellular

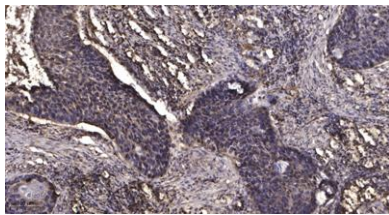




matrix in normal physiological processes, such as embryonic development, reproduction, and tissue remodeling, as well as in disease processes, such as arthritis and metastasis. Members of this subfamily contain a transmembrane domain suggesting that these proteins are expressed at the cell surface rather than secreted. The encoded preproprotein is proteolytically processed to generate the mature protease. This protein may play a role in cancer progression. [provided by RefSeq, Jan 2016],



Western blot analysis of lysates from MDA-MB-435 cells, using MMP-15 Antibody. The lane on the right is blocked with the synthesized peptide.



Immunohistochemical analysis of paraffin-embedded human Squamous cell carcinoma of lung. 1, Antibody was diluted at 1:200(4° overnight). 2, Tris-EDTA,pH9.0 was used for antigen retrieval. 3,Secondary antibody was diluted at 1:200(room temperature, 45min).

