



# MMP-10 rabbit pAb

Cat No.:ES6261

For research use only

## Overview

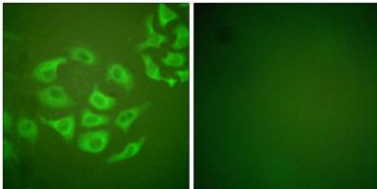
|                                 |   |
|---------------------------------|---|
| <b>Product Name</b>             | MMP-10 rabbit pAb   |
| <b>Host species</b>             | Rabbit  |
| <b>Applications</b>             | IHC;IF;WB;ELISA   |
| <b>Species Cross-Reactivity</b> | Human;Mouse;Rat   |
| <b>Recommended dilutions</b>    | WB 1:500-2000 Immunohistochemistry: 1/100 - 1/300. Immunofluorescence: 1/200 - 1/1000. ELISA: 1/40000. Not yet tested in other applications.  |
| <b>Immunogen</b>                | The antiserum was produced against synthesized peptide derived from human MMP-10. AA range:361-410  |
| <b>Specificity</b>              | MMP-10 Polyclonal Antibody detects endogenous levels of MMP-10 protein.   |
| <b>Formulation</b>              | Liquid in PBS containing 50% glycerol, 0.5% BSA and 0.02% sodium azide.   |
| <b>Storage</b>                  | Store at -20°C. Avoid repeated freeze-thaw cycles.  |
| <b>Protein Name</b>             | Stromelysin-2   |
| <b>Gene Name</b>                | MMP10   |
| <b>Cellular localization</b>    | Secreted, extracellular space, extracellular matrix .   |
| <b>Purification</b>             | The antibody was affinity-purified from rabbit antiserum by affinity-chromatography using epitope-specific immunogen.   |
| <b>Clonality</b>                | Polyclonal  |
| <b>Concentration</b>            | 1 mg/ml   |
| <b>Observed band</b>            | 54kD  |
| <b>Human Gene ID</b>            | 4319  |
| <b>Human Swiss-Prot Number</b>  | P09238  |
| <b>Alternative Names</b>        | MMP10; STMY2; Stromelysin-2; SL-2; Matrix metalloproteinase-10; MMP-10; Transin-2   |
| <b>Background</b>               | This gene encodes a member of the peptidase M10 family of matrix metalloproteinases (MMPs). Proteins in this family are involved in the breakdown of extracellular matrix in normal physiological processes, such as embryonic development, |





reproduction, and tissue remodeling, as well as in disease processes, such as arthritis and metastasis. The encoded preproprotein is proteolytically processed to generate the mature protease. This secreted protease breaks down fibronectin, laminin, elastin, proteoglycan core protein, gelatins, and several types of collagen. The gene is part of a cluster of MMP genes on chromosome 11. [provided by RefSeq, Jan 2016],

Immunofluorescence analysis of HepG2 cells, using MMP-10 Antibody. The picture on the right is blocked with the synthesized peptide.



Immunohistochemistry analysis of paraffin-embedded human lung carcinoma tissue, using MMP-10 Antibody. The picture on the right is blocked with the synthesized peptide.

