



FoxO4 (phospho Ser262) rabbit pAb

Cat No.:ES6258

For research use only

Overview

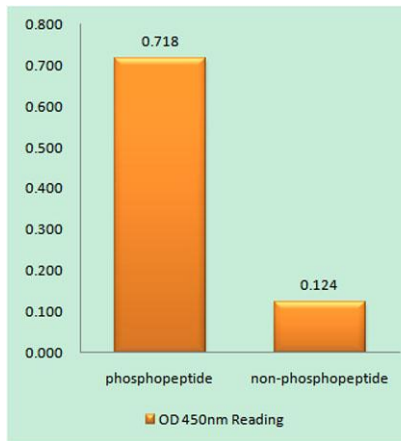
Product Name	FoxO4 (phospho Ser262) rabbit pAb
Host species	Rabbit
Applications	WB;IHC;IF;ELISA
Species Cross-Reactivity	Human;Mouse
Recommended dilutions	Western Blot: 1/500 - 1/2000. Immunohistochemistry: 1/100 - 1/300. ELISA: 1/10000. Not yet tested in other applications.
Immunogen	The antiserum was produced against synthesized peptide derived from human FOXO4 around the phosphorylation site of Ser262. AA range:228-277
Specificity	Phospho-FoxO4 (S262) Polyclonal Antibody detects endogenous levels of FoxO4 protein only when phosphorylated at S262.
Formulation	Liquid in PBS containing 50% glycerol, 0.5% BSA and 0.02% sodium azide.
Storage	Store at -20°C. Avoid repeated freeze-thaw cycles.
Protein Name	Forkhead box protein O4
Gene Name	FOXO4
Cellular localization	Cytoplasm. Nucleus. When phosphorylated, translocated from nucleus to cytoplasm. Dephosphorylation triggers nuclear translocation. Monoubiquitination increases nuclear localization. When deubiquitinated, translocated from nucleus to cytoplasm.
Purification	The antibody was affinity-purified from rabbit antiserum by affinity-chromatography using epitope-specific immunogen.
Clonality	Polyclonal
Concentration	1 mg/ml
Observed band	54kD
Human Gene ID	4303
Human Swiss-Prot Number	P98177
Alternative Names	FOXO4; AFX; AFX1; MLLT7; Forkhead box protein O4;





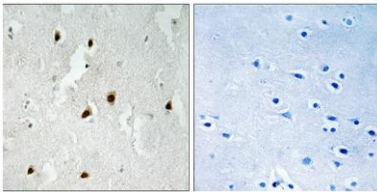
Background

Fork head domain transcription factor AFX1
This gene encodes a member of the O class of winged helix/forkhead transcription factor family. Proteins encoded by this class are regulated by factors involved in growth and differentiation indicating they play a role in these processes. A translocation involving this gene on chromosome X and the homolog of the Drosophila trithorax gene, encoding a DNA binding protein, located on chromosome 11 is associated with leukemia. Multiple transcript variants encoding different isoforms have been found for this gene. [provided by RefSeq, Jan 2010],



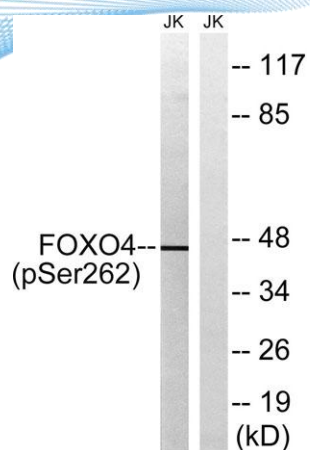
Enzyme-Linked Immunosorbent Assay (Phospho-ELISA) for Immunogen Phosphopeptide (Phospho-left) and Non-Phosphopeptide (Phospho-right), using FOXO4 (Phospho-Ser262) Antibody

Immunohistochemistry analysis of paraffin-embedded human brain, using FOXO4 (Phospho-Ser262) Antibody. The picture on the right is blocked with the phospho peptide.





ELK Biotechnology



Western blot analysis of lysates from Jurkat cells treated with starved 24h, using FOXO4 (Phospho-Ser262) Antibody. The lane on the right is blocked with the phospho peptide.



+86-27-59760950

ELKbio@ELKbiotech.com

www.elkbiotech.com

23-2, No.388 Gaoxin 2nd Road,Wuhan East Lake Hi-tech Development Zone, Hubei , P.R.C