



AChE rabbit pAb

Cat No.:ES6254

For research use only

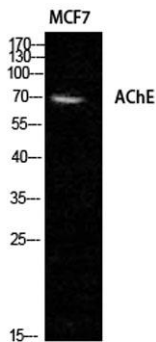
Overview

Product Name	AChE rabbit pAb
Host species	Rabbit
Applications	WB;IHC;IF;ELISA
Species Cross-Reactivity	Human;Mouse;Rat
Recommended dilutions	Western Blot: 1/500 - 1/2000. Immunohistochemistry: 1/100 - 1/300. ELISA: 1/40000. Not yet tested in other applications.
Immunogen	The antiserum was produced against synthesized peptide derived from human AChE. AA range:536-585
Specificity	AChE Polyclonal Antibody detects endogenous levels of AChE protein.
Formulation	Liquid in PBS containing 50% glycerol, 0.5% BSA and 0.02% sodium azide.
Storage	Store at -20°C. Avoid repeated freeze-thaw cycles.
Protein Name	Acetylcholinesterase
Gene Name	ACHE
Cellular localization	Cell junction, synapse . Secreted . Cell membrane ; Peripheral membrane protein .; [Isoform T]: Nucleus. Only observed in apoptotic nuclei.; [Isoform H]: Cell membrane ; Lipid-anchor, GPI-anchor ; Extracellular side .
Purification	The antibody was affinity-purified from rabbit antiserum by affinity-chromatography using epitope-specific immunogen.
Clonality	Polyclonal
Concentration	1 mg/ml
Observed band	70kD
Human Gene ID	43
Human Swiss-Prot Number	P22303
Alternative Names	ACHE; Acetylcholinesterase; AChE
Background	Acetylcholinesterase hydrolyzes the neurotransmitter, acetylcholine at neuromuscular



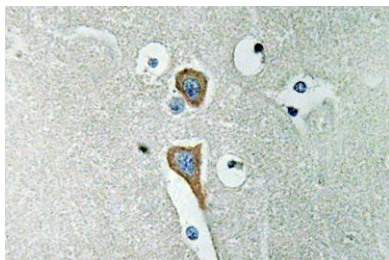


junctions and brain cholinergic synapses, and thus terminates signal transmission. It is also found on the red blood cell membranes, where it constitutes the Yt blood group antigen. Acetylcholinesterase exists in multiple molecular forms which possess similar catalytic properties, but differ in their oligomeric assembly and mode of cell attachment to the cell surface. It is encoded by the single ACHE gene, and the structural diversity in the gene products arises from alternative mRNA splicing, and post-translational associations of catalytic and structural subunits. The major form of acetylcholinesterase found in brain, muscle and other tissues is the hydrophilic species, which forms disulfide-linked oligomers with collagenous, or lipid-containing structural subunits. The other, alternatively



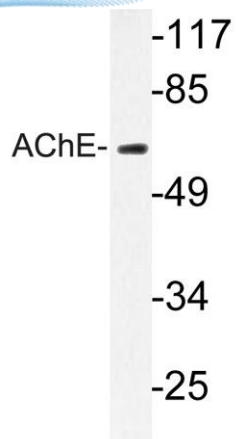
Western Blot analysis of MCF7 cells using AChE Polyclonal Antibody diluted at 1:1000

Immunohistochemistry analysis of AChE antibody in paraffin-embedded human brain tissue.





ELK Biotechnology



Western blot analysis of lysates from Jurkat cells, using AChE antibody.



+86-27-59760950

ELKbio@ELKbiotech.com

www.elkbiotech.com

23-2, No.388 Gaoxin 2nd Road, Wuhan East Lake Hi-tech Development Zone, Hubei, P.R.C.