



# CD71/TfR (phospho Ser24) rabbit pAb

Cat No.:ES6200

For research use only

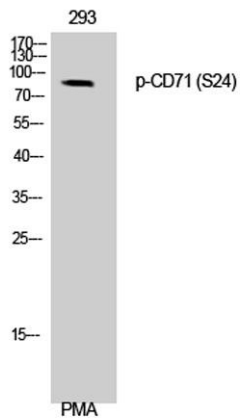
## Overview

<b>Product Name</b>	CD71/TfR (phospho Ser24) rabbit pAb
<b>Host species</b>	Rabbit
<b>Applications</b>	WB;IHC;IF;ELISA
<b>Species Cross-Reactivity</b>	Human;Mouse
<b>Recommended dilutions</b>	Western Blot: 1/500 - 1/2000. Immunohistochemistry: 1/100 - 1/300. ELISA: 1/10000. Not yet tested in other applications.
<b>Immunogen</b>	The antiserum was produced against synthesized peptide derived from human CD71/TfR around the phosphorylation site of Ser24. AA range:15-64
<b>Specificity</b>	Phospho-CD71 (S24) Polyclonal Antibody detects endogenous levels of CD71 protein only when phosphorylated at S24.
<b>Formulation</b>	Liquid in PBS containing 50% glycerol, 0.5% BSA and 0.02% sodium azide.
<b>Storage</b>	Store at -20°C. Avoid repeated freeze-thaw cycles.
<b>Protein Name</b>	Transferrin receptor protein 1
<b>Gene Name</b>	TFRC
<b>Cellular localization</b>	Cell membrane ; Single-pass type II membrane protein . Melanosome . Identified by mass spectrometry in melanosome fractions from stage I to stage IV. . ; [Transferrin receptor protein 1, serum form]: Secreted .
<b>Purification</b>	The antibody was affinity-purified from rabbit antiserum by affinity-chromatography using epitope-specific immunogen.
<b>Clonality</b>	Polyclonal
<b>Concentration</b>	1 mg/ml
<b>Observed band</b>	89kD
<b>Human Gene ID</b>	4155
<b>Human Swiss-Prot Number</b>	P02786
<b>Alternative Names</b>	TFRC; Transferrin receptor protein 1; TR; TfR; TfR1; Trfr; T9; p90; CD antigen CD71

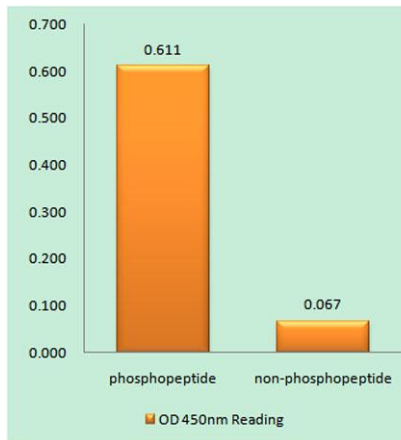


## Background

This gene encodes a cell surface receptor necessary for cellular iron uptake by the process of receptor-mediated endocytosis. This receptor is required for erythropoiesis and neurologic development. Multiple alternatively spliced variants have been identified. [provided by RefSeq, Sep 2015],

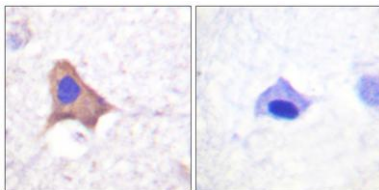


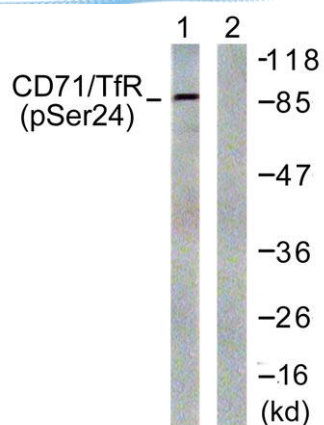
Western Blot analysis of 293 cells using Phospho-CD71 (S24) Polyclonal Antibody



Enzyme-Linked Immunosorbent Assay (Phospho-ELISA) for Immunogen Phosphopeptide (Phospho-left) and Non-Phosphopeptide (Phospho-right), using CD71/TfR (Phospho-Ser24) Antibody

Immunohistochemistry analysis of paraffin-embedded human brain, using CD71/TfR (Phospho-Ser24) Antibody. The picture on the right is blocked with the phospho peptide.





Western blot analysis of lysates from 293 cells treated with PMA 125ng/ml 30', using CD71/TfR (Phospho-Ser24) Antibody. The lane on the right is blocked with the phospho peptide.

