



Tau (phospho Ser422) rabbit pAb

Cat No.:ES6181

For research use only

Overview

Product Name	Tau (phospho Ser422) rabbit pAb
Host species	Rabbit
Applications	WB;IHC;IF;ELISA
Species Cross-Reactivity	Human;Mouse;Rat
Recommended dilutions	Western Blot: 1/500 - 1/2000. Immunohistochemistry: 1/100 - 1/300. ELISA: 1/10000. Not yet tested in other applications.
Immunogen	The antiserum was produced against synthesized peptide derived from human Tau around the phosphorylation site of Ser422. AA range:706-755
Specificity	Phospho-Tau (S422) Polyclonal Antibody detects endogenous levels of Tau protein only when phosphorylated at S422.
Formulation	Liquid in PBS containing 50% glycerol, 0.5% BSA and 0.02% sodium azide.
Storage	Store at -20°C. Avoid repeated freeze-thaw cycles.
Protein Name	Microtubule-associated protein tau
Gene Name	MAPT
Cellular localization	Cytoplasm, cytosol . Cell membrane ; Peripheral membrane protein ; Cytoplasmic side . Cytoplasm, cytoskeleton . Cell projection, axon . Cell projection, dendrite . Secreted . Mostly found in the axons of neurons, in the cytosol and in association with pla
Purification	The antibody was affinity-purified from rabbit antiserum by affinity-chromatography using epitope-specific immunogen.
Clonality	Polyclonal
Concentration	1 mg/ml
Observed band	50-85kD
Human Gene ID	4137
Human Swiss-Prot Number	P10636
Alternative Names	MAPT; MAPTL; MTBT1; TAU; Microtubule-associated protein tau; Neurofibrillary tangle protein; Paired



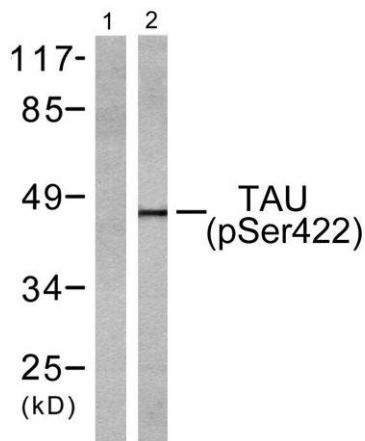
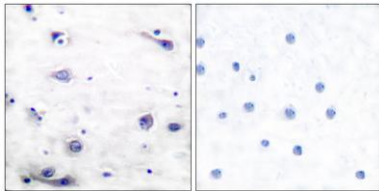


Background

helical filament-tau; PHF-tau

This gene encodes the microtubule-associated protein tau (MAPT) whose transcript undergoes complex, regulated alternative splicing, giving rise to several mRNA species. MAPT transcripts are differentially expressed in the nervous system, depending on stage of neuronal maturation and neuron type. MAPT gene mutations have been associated with several neurodegenerative disorders such as Alzheimer's disease, Pick's disease, frontotemporal dementia, cortico-basal degeneration and progressive supranuclear palsy. [provided by RefSeq, Jul 2008],

Immunohistochemistry analysis of paraffin-embedded human brain, using Tau (Phospho-Ser422) Antibody. The picture on the right is blocked with the phospho peptide.



Western blot analysis of lysates from mouse brain, using Tau (Phospho-Ser422) Antibody. The lane on the left is blocked with the phospho peptide.

