



Tau (phospho Thr205) rabbit pAb

Cat No.:ES6176

For research use only

Overview

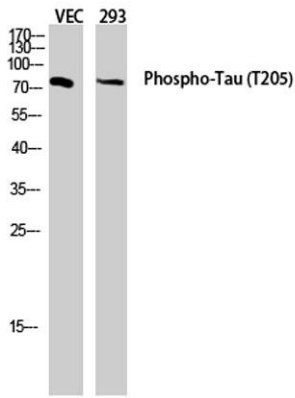
Product Name	Tau (phospho Thr205) rabbit pAb
Host species	Rabbit
Applications	WB;ELISA
Species Cross-Reactivity	Human;Mouse;Rat
Recommended dilutions	Western Blot: 1/500 - 1/2000. ELISA: 1/20000. Not yet tested in other applications.
Immunogen	The antiserum was produced against synthesized peptide derived from human Tau around the phosphorylation site of Thr205. AA range:491-540
Specificity	Phospho-Tau (T205) Polyclonal Antibody detects endogenous levels of Tau protein only when phosphorylated at T205.
Formulation	Liquid in PBS containing 50% glycerol, 0.5% BSA and 0.02% sodium azide.
Storage	Store at -20°C. Avoid repeated freeze-thaw cycles.
Protein Name	Microtubule-associated protein tau
Gene Name	MAPT
Cellular localization	Cytoplasm, cytosol . Cell membrane ; Peripheral membrane protein ; Cytoplasmic side . Cytoplasm, cytoskeleton . Cell projection, axon . Cell projection, dendrite . Secreted . Mostly found in the axons of neurons, in the cytosol and in association with pla
Purification	The antibody was affinity-purified from rabbit antiserum by affinity-chromatography using epitope-specific immunogen.
Clonality	Polyclonal
Concentration	1 mg/ml
Observed band	50-85kD
Human Gene ID	4137
Human Swiss-Prot Number	P10636
Alternative Names	MAPT; MAPTL; MTBT1; TAU; Microtubule-associated protein tau; Neurofibrillary tangle protein; Paired helical filament-tau; PHF-tau



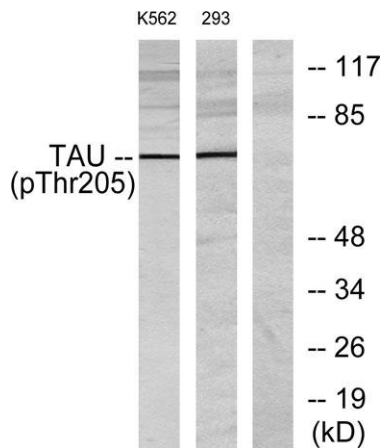


Background

This gene encodes the microtubule-associated protein tau (MAPT) whose transcript undergoes complex, regulated alternative splicing, giving rise to several mRNA species. MAPT transcripts are differentially expressed in the nervous system, depending on stage of neuronal maturation and neuron type. MAPT gene mutations have been associated with several neurodegenerative disorders such as Alzheimer's disease, Pick's disease, frontotemporal dementia, cortico-basal degeneration and progressive supranuclear palsy. [provided by RefSeq, Jul 2008],



Western blot analysis of VEC 293 lysis using Phospho-Tau (T205) antibody. Antibody was diluted at 1:2000



Western blot analysis of lysates from K562 cells and 293 cells, using Tau (Phospho-Thr205) Antibody. The lane on the right is blocked with the phospho peptide.

