



Smad6 rabbit pAb

Cat No.:ES6163

For research use only

Overview

Product Name	Smad6 rabbit pAb
Host species	Rabbit
Applications	WB;IHC;IF;ELISA
Species Cross-Reactivity	Human;Mouse
Recommended dilutions	Western Blot: 1/500 - 1/2000. Immunohistochemistry: 1/100 - 1/300. ELISA: 1/40000. Not yet tested in other applications.
Immunogen	The antiserum was produced against synthesized peptide derived from human Smad6. AA range:323-372
Specificity	Smad6 Polyclonal Antibody detects endogenous levels of Smad6 protein.
Formulation	Liquid in PBS containing 50% glycerol, 0.5% BSA and 0.02% sodium azide.
Storage	Store at -20°C. Avoid repeated freeze-thaw cycles.
Protein Name	Mothers against decapentaplegic homolog 6
Gene Name	SMAD6
Cellular localization	Nucleus .
Purification	The antibody was affinity-purified from rabbit antiserum by affinity-chromatography using epitope-specific immunogen.
Clonality	Polyclonal
Concentration	1 mg/ml
Observed band	62kD
Human Gene ID	4091
Human Swiss-Prot Number	O43541
Alternative Names	SMAD6; MADH6; Mothers against decapentaplegic homolog 6; MAD homolog 6; Mothers against DPP homolog 6; SMAD family member 6; SMAD 6; Smad6; hSMAD6
Background	The protein encoded by this gene belongs to the SMAD family of proteins, which are related to <i>Drosophila</i> 'mothers against decapentaplegic' (Mad)

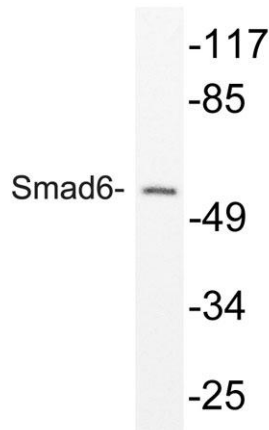
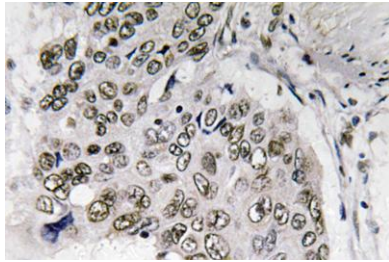




ELK Biotechnology

and *C. elegans* Sma. SMAD proteins are signal transducers and transcriptional modulators that mediate multiple signaling pathways. This protein functions in the negative regulation of BMP and TGF-beta/activin-signalling. Multiple transcript variants have been found for this gene.[provided by RefSeq, Sep 2014],

Immunohistochemistry analysis of Smad6 antibody in paraffin-embedded human lung carcinoma tissue.



Western blot analysis of lysate from mouse brain, using Smad6 antibody.



+86-27-59760950

ELKbio@ELKbiotech.com

www.elkbiotech.com

23-2, No.388 Gaoxin 2nd Road,Wuhan East Lake Hi-tech Development Zone, Hubei , P.R.C