



# MARCKS (phospho Ser159) rabbit pAb

Cat No.:ES6149

For research use only

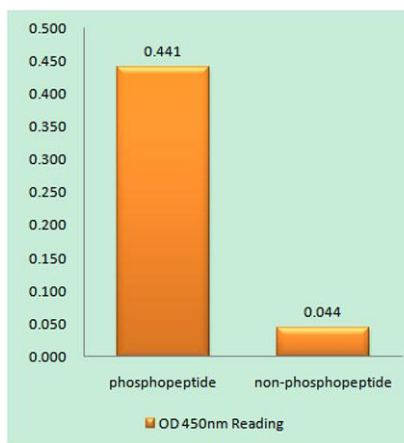
## Overview

<b>Product Name</b>	MARCKS (phospho Ser159) rabbit pAb
<b>Host species</b>	Rabbit
<b>Applications</b>	WB;ELISA
<b>Species Cross-Reactivity</b>	Human;Mouse;Rat
<b>Recommended dilutions</b>	Western Blot: 1/500 - 1/2000. ELISA: 1/20000. Not yet tested in other applications.
<b>Immunogen</b>	The antiserum was produced against synthesized peptide derived from human MARCKS around the phosphorylation site of Ser158. AA range:126-175
<b>Specificity</b>	Phospho-MARCKS (S158) Polyclonal Antibody detects endogenous levels of MARCKS protein only when phosphorylated at S158.
<b>Formulation</b>	Liquid in PBS containing 50% glycerol, 0.5% BSA and 0.02% sodium azide.
<b>Storage</b>	Store at -20°C. Avoid repeated freeze-thaw cycles.
<b>Protein Name</b>	Myristoylated alanine-rich C-kinase substrate
<b>Gene Name</b>	MARCKS
<b>Cellular localization</b>	Cytoplasm, cytoskeleton . Membrane ; Lipid-anchor .
<b>Purification</b>	The antibody was affinity-purified from rabbit antiserum by affinity-chromatography using epitope-specific immunogen.
<b>Clonality</b>	Polyclonal
<b>Concentration</b>	1 mg/ml
<b>Observed band</b>	35kD
<b>Human Gene ID</b>	4082
<b>Human Swiss-Prot Number</b>	P29966
<b>Alternative Names</b>	MARCKS; MACS; PRKCSL; Myristoylated alanine-rich C-kinase substrate; MARCKS; Protein kinase C substrate; 80 kDa protein, light chain; 80K-L protein; PKCSL
<b>Background</b>	The protein encoded by this gene is a substrate for protein kinase C. It is localized to the plasma membrane and is an actin filament crosslinking

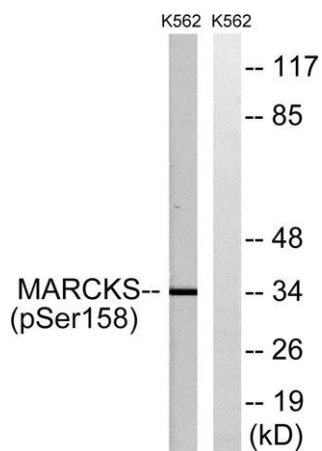




protein. Phosphorylation by protein kinase C or binding to calcium-calmodulin inhibits its association with actin and with the plasma membrane, leading to its presence in the cytoplasm. The protein is thought to be involved in cell motility, phagocytosis, membrane trafficking and mitogenesis. [provided by RefSeq, Jul 2008],



Enzyme-Linked Immunosorbent Assay (Phospho-ELISA) for Immunogen Phosphopeptide (Phospho-left) and Non-Phosphopeptide (Phospho-right), using MARCKS (Phospho-Ser158) Antibody



Western blot analysis of lysates from K562 cells treated with EGF 200ng/ml 30', using MARCKS (Phospho-Ser158) Antibody. The lane on the right is blocked with the phospho peptide.

