



LSP1 rabbit pAb

Cat No.:ES6140

For research use only

Overview

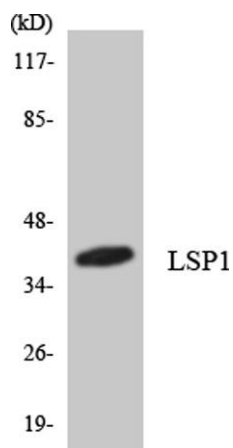
Product Name	LSP1 rabbit pAb
Host species	Rabbit
Applications	WB;ELISA
Species Cross-Reactivity	Human;Rat;Mouse;
Recommended dilutions	Western Blot: 1/500 - 1/2000. ELISA: 1/5000. Not yet tested in other applications.
Immunogen	The antiserum was produced against synthesized peptide derived from human LSP1. AA range:104-153
Specificity	LSP1 Polyclonal Antibody detects endogenous levels of LSP1 protein.
Formulation	Liquid in PBS containing 50% glycerol, 0.5% BSA and 0.02% sodium azide.
Storage	Store at -20°C. Avoid repeated freeze-thaw cycles.
Protein Name	Lymphocyte-specific protein 1
Gene Name	LSP1
Cellular localization	Cell membrane; Peripheral membrane protein; Cytoplasmic side.
Purification	The antibody was affinity-purified from rabbit antiserum by affinity-chromatography using epitope-specific immunogen.
Clonality	Polyclonal
Concentration	1 mg/ml
Observed band	37kD
Human Gene ID	4046
Human Swiss-Prot Number	P33241
Alternative Names	LSP1; WP34; Lymphocyte-specific protein 1; 47 kDa actin-binding protein; 52 kDa phosphoprotein; pp52; Lymphocyte-specific antigen WP34
Background	This gene encodes an intracellular F-actin binding protein. The protein is expressed in lymphocytes, neutrophils, macrophages, and endothelium and may regulate neutrophil motility, adhesion to





ELK Biotechnology

fibrinogen matrix proteins, and transendothelial migration. Alternative splicing results in multiple transcript variants encoding different isoforms. [provided by RefSeq, Jul 2008],



Western blot analysis of the lysates from Jurkat cells using LSP1 antibody.



+86-27-59760950

ELKbio@ELKbiotech.com

www.elkbiotech.com

23-2, No.388 Gaoxin 2nd Road, Wuhan East Lake Hi-tech Development Zone, Hubei, P.R.C