



Rho H rabbit pAb

Cat No.:ES6118

For research use only

Overview

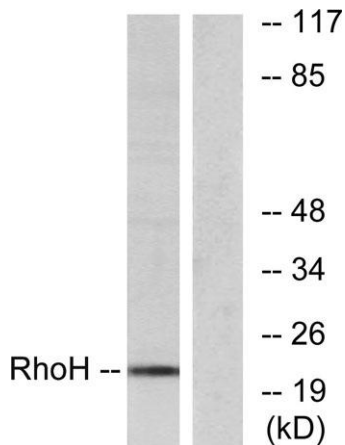
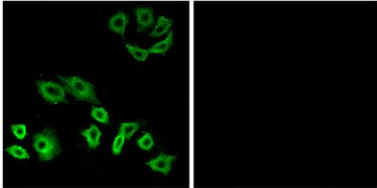
Product Name	Rho H rabbit pAb
Host species	Rabbit
Applications	WB;IHC;IF;ELISA
Species Cross-Reactivity	Human;Mouse;Rat
Recommended dilutions	Western Blot: 1/500 - 1/2000. Immunohistochemistry: 1/100 - 1/300. Immunofluorescence: 1/200 - 1/1000. ELISA: 1/20000. Not yet tested in other applications.
Immunogen	The antiserum was produced against synthesized peptide derived from human RhoH. AA range:141-190
Specificity	Rho H Polyclonal Antibody detects endogenous levels of Rho H protein.
Formulation	Liquid in PBS containing 50% glycerol, 0.5% BSA and 0.02% sodium azide.
Storage	Store at -20°C. Avoid repeated freeze-thaw cycles.
Protein Name	Rho-related GTP-binding protein RhoH
Gene Name	RhoH
Cellular localization	Cytoplasm . Cell membrane ; Lipid-anchor ; Cytoplasmic side . Colocalizes together with ZAP70 in the immunological synapse. .
Purification	The antibody was affinity-purified from rabbit antiserum by affinity-chromatography using epitope-specific immunogen.
Clonality	Polyclonal
Concentration	1 mg/ml
Observed band	21kD
Human Gene ID	399
Human Swiss-Prot Number	Q15669
Alternative Names	RHOH; ARHH; TTF; Rho-related GTP-binding protein RhoH; GTP-binding protein TTF; Translocation three four protein
Background	The protein encoded by this gene is a member of





the Ras superfamily of guanosine triphosphate (GTP)-metabolizing enzymes. The encoded protein is expressed in hematopoietic cells, where it functions as a negative regulator of cell growth and survival. This gene may be hypermutated or misexpressed in leukemias and lymphomas. Chromosomal translocations in non-Hodgkin's lymphoma occur between this locus and B-cell CLL/lymphoma 6 (BCL6) on chromosome 3, leading to the production of fusion transcripts. Alternative splicing in the 5' untranslated region results in multiple transcript variants that encode the same protein. [provided by RefSeq, May 2013],

Immunofluorescence analysis of A549 cells, using RhoH Antibody. The picture on the right is blocked with the synthesized peptide.

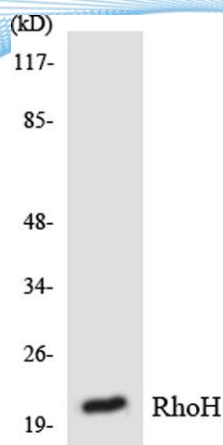


Western blot analysis of lysates from HT-29 cells, using RhoH Antibody. The lane on the right is blocked with the synthesized peptide.

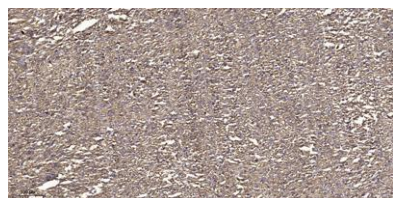




ELK Biotechnology



Western blot analysis of the lysates from RAW264.7 cells using RhoH antibody.



Immunohistochemical analysis of paraffin-embedded human small intestinal carcinoma tissue. 1, primary Antibody was diluted at 1:200 (4° overnight). 2, Sodium citrate pH 6.0 was used for antigen retrieval (>98°C, 20min). 3, Secondary antibody was diluted at 1:200



+86-27-59760950

ELKbio@ELKbiotech.com

www.elkbiotech.com

23-2, No.388 Gaoxin 2nd Road, Wuhan East Lake Hi-tech Development Zone, Hubei, P.R.C