



# Galectin-7 rabbit pAb

Cat No.:ES6108

For research use only

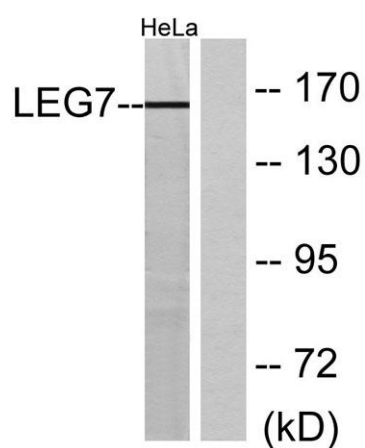
## Overview

<b>Product Name</b>	Galectin-7 rabbit pAb
<b>Host species</b>	Rabbit
<b>Applications</b>	IHC;IF;WB;ELISA
<b>Species Cross-Reactivity</b>	Human;Mouse;Rat
<b>Recommended dilutions</b>	WB 1:500-2000 Immunohistochemistry: 1/100 - 1/300. ELISA: 1/5000. Not yet tested in other applications.
<b>Immunogen</b>	The antiserum was produced against synthesized peptide derived from human LEG7. AA range:41-90
<b>Specificity</b>	Galectin-7 Polyclonal Antibody detects endogenous levels of Galectin-7 protein.
<b>Formulation</b>	Liquid in PBS containing 50% glycerol, 0.5% BSA and 0.02% sodium azide.
<b>Storage</b>	Store at -20°C. Avoid repeated freeze-thaw cycles.
<b>Protein Name</b>	Galectin-7
<b>Gene Name</b>	LGALS7
<b>Cellular localization</b>	Cytoplasm . Nucleus . Secreted . May be secreted by a non-classical secretory pathway.
<b>Purification</b>	The antibody was affinity-purified from rabbit antiserum by affinity-chromatography using epitope-specific immunogen.
<b>Clonality</b>	Polyclonal
<b>Concentration</b>	1 mg/ml
<b>Observed band</b>	160kD
<b>Human Gene ID</b>	3963/653499
<b>Human Swiss-Prot Number</b>	P47929
<b>Alternative Names</b>	LGALS7; PIG1; LGALS7B; Galectin-7; Gal-7; HKL-14; PI7; p53-induced gene 1 protein
<b>Background</b>	The galectins are a family of beta-galactoside-binding proteins implicated in modulating cell-cell and cell-matrix interactions. Differential and in situ hybridization studies indicate that this lectin is specifically expressed in

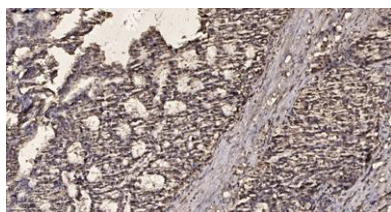




keratinocytes and found mainly in stratified squamous epithelium. A duplicate copy of this gene (GeneID:653499) is found adjacent to, but on the opposite strand on chromosome 19. [provided by RefSeq, Jul 2008],



Western blot analysis of lysates from HeLa cells, using LEG7 Antibody. The lane on the right is blocked with the synthesized peptide.



Immunohistochemical analysis of paraffin-embedded human liver cancer. 1, Antibody was diluted at 1:200(4° overnight). 2, Tris-EDTA,pH9.0 was used for antigen retrieval. 3,Secondary antibody was diluted at 1:200(room temperature, 45min).

