



Galectin-1 rabbit pAb

Cat No.:ES6104

For research use only

Overview

Product Name	Galectin-1 rabbit pAb
Host species	Rabbit
Applications	WB;ELISA
Species Cross-Reactivity	Human;Rat;Deer
Recommended dilutions	Western Blot: 1/500 - 1/2000. ELISA: 1/40000. Not yet tested in other applications.
Immunogen	Synthesized peptide derived from Galectin-1 . at AA range: 10-90
Specificity	Galectin-1 Polyclonal Antibody detects endogenous levels of Galectin-1 protein.
Formulation	Liquid in PBS containing 50% glycerol, 0.5% BSA and 0.02% sodium azide.
Storage	Store at -20°C. Avoid repeated freeze-thaw cycles.
Protein Name	Galectin-1
Gene Name	LGALS1
Cellular localization	Secreted, extracellular space, extracellular matrix . Cytoplasm . Secreted . Can be secreted; the secretion is dependent on protein unfolding and facilitated by the cargo receptor TMED10; it results in protein translocation from the cytoplasm into the ERG
Purification	The antibody was affinity-purified from rabbit antiserum by affinity-chromatography using epitope-specific immunogen.
Clonality	Polyclonal
Concentration	1 mg/ml
Observed band	15kD
Human Gene ID	3956
Human Swiss-Prot Number	P09382
Alternative Names	LGALS1; Galectin-1; Gal-1; 14 kDa laminin-binding protein; HLBP14; 14 kDa lectin; Beta-galactoside-binding lectin L-14-I; Galaptin; HBL; HPL; Lactose-binding lectin 1; Lectin

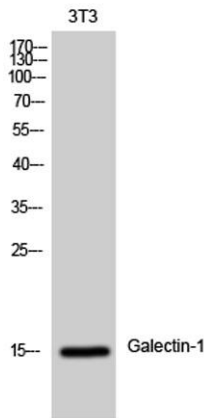




Background

galactoside-binding soluble 1; Putative
MAPK-activating protein P

The galectins are a family of
beta-galactoside-binding proteins implicated in
modulating cell-cell and cell-matrix interactions. This
gene product may act as an autocrine negative
growth factor that regulates cell proliferation.
[provided by RefSeq, Jul 2008],



Western Blot analysis of 3T3 cells using Galectin-1
Polyclonal Antibody diluted at 1:500

