



SLP-76 (phospho Tyr128) rabbit pAb

Cat No.:ES6099

For research use only

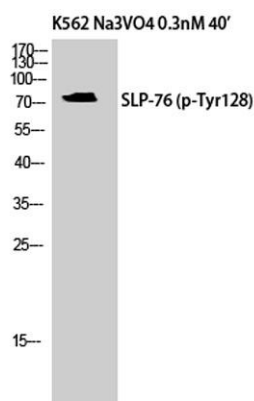
Overview

Product Name	SLP-76 (phospho Tyr128) rabbit pAb
Host species	Rabbit
Applications	WB;IHC;IF;ELISA
Species Cross-Reactivity	Human;Mouse;Rat
Recommended dilutions	Western Blot: 1/500 - 1/2000. Immunohistochemistry: 1/100 - 1/300. ELISA: 1/5000. Not yet tested in other applications.
Immunogen	The antiserum was produced against synthesized peptide derived from human SLP-76 around the phosphorylation site of Tyr128. AA range:94-143
Specificity	Phospho-SLP-76 (Y128) Polyclonal Antibody detects endogenous levels of SLP-76 protein only when phosphorylated at Y128.
Formulation	Liquid in PBS containing 50% glycerol, 0.5% BSA and 0.02% sodium azide.
Storage	Store at -20°C. Avoid repeated freeze-thaw cycles.
Protein Name	Lymphocyte cytosolic protein 2
Gene Name	LCP2
Cellular localization	Cytoplasm .
Purification	The antibody was affinity-purified from rabbit antiserum by affinity-chromatography using epitope-specific immunogen.
Clonality	Polyclonal
Concentration	1 mg/ml
Observed band	75kD
Human Gene ID	3937
Human Swiss-Prot Number	Q13094
Alternative Names	LCP2; Lymphocyte cytosolic protein 2; SH2 domain-containing leukocyte protein of 76 kDa; SLP-76 tyrosine phosphoprotein; SLP76
Background	SLP-76 was originally identified as a substrate of the ZAP-70 protein tyrosine kinase following T cell receptor (TCR) ligation in the leukemic T cell line



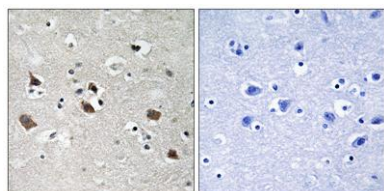


Jurkat. The SLP-76 locus has been localized to human chromosome 5q33 and the gene structure has been partially characterized in mice. The human and murine cDNAs both encode 533 amino acid proteins that are 72% identical and comprised of three modular domains. The NH₂-terminus contains an acidic region that includes a PEST domain and several tyrosine residues which are phosphorylated following TCR ligation. SLP-76 also contains a central proline-rich domain and a COOH-terminal SH2 domain. A number of additional proteins have been identified that associate with SLP-76 both constitutively and inducibly following receptor ligation, supporting the notion that SLP-76 functions as an adaptor or scaffold protein. Studies using SLP-76 deficient T c



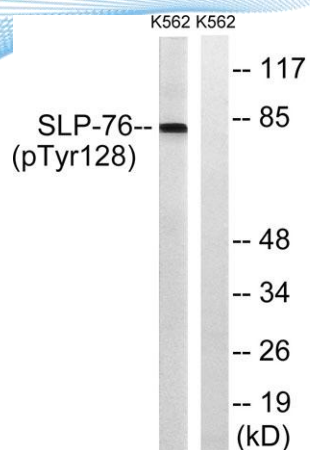
Western Blot analysis of K562 cells using Phospho-SLP-76 (Y128) Polyclonal Antibody

Immunohistochemistry analysis of paraffin-embedded human brain, using SLP-76 (Phospho-Tyr128) Antibody. The picture on the right is blocked with the phospho peptide.





ELK Biotechnology



Western blot analysis of lysates from K562 cells treated with Na_3VO_4 0.3nM 40', using SLP-76 (Phospho-Tyr128) Antibody. The lane on the right is blocked with the phospho peptide.



+86-27-59760950

ELKbio@ELKbiotech.com

www.elkbiotech.com

23-2, No.388 Gaoxin 2nd Road,Wuhan East Lake Hi-tech Development Zone, Hubei , P.R.C