



Olfactory receptor 5111 rabbit pAb

Cat No.:ES6049

For research use only

Overview

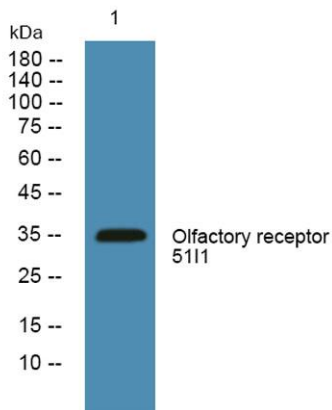
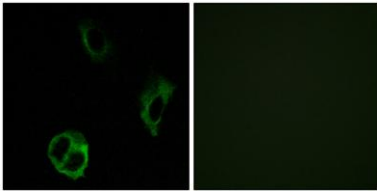
Product Name	Olfactory receptor 5111 rabbit pAb
Host species	Rabbit
Applications	WB;IF;ELISA
Species Cross-Reactivity	Human;Rat;Mouse;
Recommended dilutions	Western Blot: 1/500 - 1/2000. Immunofluorescence: 1/200 - 1/1000. ELISA: 1/10000. Not yet tested in other applications.
Immunogen	The antiserum was produced against synthesized peptide derived from human OR5111. AA range:265-314
Specificity	Olfactory receptor 5111 Polyclonal Antibody detects endogenous levels of Olfactory receptor 5111 protein.
Formulation	Liquid in PBS containing 50% glycerol, 0.5% BSA and 0.02% sodium azide.
Storage	Store at -20°C. Avoid repeated freeze-thaw cycles.
Protein Name	Olfactory receptor 5111
Gene Name	OR5111
Cellular localization	Cell membrane; Multi-pass membrane protein.
Purification	The antibody was affinity-purified from rabbit antiserum by affinity-chromatography using epitope-specific immunogen.
Clonality	Polyclonal
Concentration	1 mg/ml
Observed band	35kD
Human Gene ID	390063
Human Swiss-Prot Number	Q9H343
Alternative Names	OR5111; Olfactory receptor 5111; Odorant receptor HOR5'beta11; Olfactory receptor OR11-39
Background	Olfactory receptors interact with odorant molecules in the nose, to initiate a neuronal response that triggers the perception of a smell. The olfactory receptor proteins are members of a large family of





G-protein-coupled receptors (GPCR) arising from single coding-exon genes. Olfactory receptors share a 7-transmembrane domain structure with many neurotransmitter and hormone receptors and are responsible for the recognition and G protein-mediated transduction of odorant signals. The olfactory receptor gene family is the largest in the genome. The nomenclature assigned to the olfactory receptor genes and proteins for this organism is independent of other organisms. [provided by RefSeq, Jul 2008],

Immunofluorescence analysis of COS7 cells, using OR5111 Antibody. The picture on the right is blocked with the synthesized peptide.



Western blot analysis of lysates from KB cells, primary antibody was diluted at 1:1000, 4° over night

