



# TBPL2 rabbit pAb

Cat No.:ES6034

For research use only

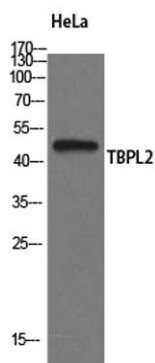
## Overview

<b>Product Name</b>	TBPL2 rabbit pAb
<b>Host species</b>	Rabbit
<b>Applications</b>	WB;IHC;IF;ELISA
<b>Species Cross-Reactivity</b>	Human;Rat;Mouse;
<b>Recommended dilutions</b>	Western Blot: 1/500 - 1/2000. Immunohistochemistry: 1/100 - 1/300. ELISA: 1/5000. Not yet tested in other applications.
<b>Immunogen</b>	The antiserum was produced against synthesized peptide derived from human TBPL2. AA range:81-130
<b>Specificity</b>	TBPL2 Polyclonal Antibody detects endogenous levels of TBPL2 protein.
<b>Formulation</b>	Liquid in PBS containing 50% glycerol, 0.5% BSA and 0.02% sodium azide.
<b>Storage</b>	Store at -20°C. Avoid repeated freeze-thaw cycles.
<b>Protein Name</b>	TATA box-binding protein-like protein 2
<b>Gene Name</b>	TBPL2
<b>Cellular localization</b>	Cytoplasm . Nucleus . Present in the cytoplasm during cytokinesis. .
<b>Purification</b>	The antibody was affinity-purified from rabbit antiserum by affinity-chromatography using epitope-specific immunogen.
<b>Clonality</b>	Polyclonal
<b>Concentration</b>	1 mg/ml
<b>Observed band</b>	41kD
<b>Human Gene ID</b>	387332
<b>Human Swiss-Prot Number</b>	Q6SJ96
<b>Alternative Names</b>	TBPL2; TBP2; TRF3; TATA box-binding protein-like protein 2; TBP-like protein 2; TATA box-binding protein-related factor 3; TBP-related factor 3
<b>Background</b>	function:Transcription factor required in complex with TAF3 for the differentiation of myoblasts into myocytes. The complex replaces TFIID at specific

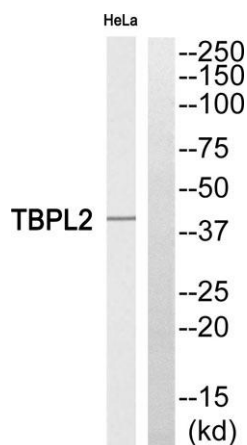




promoters at an early stage in the differentiation process.,similarity:Belongs to the TBP family.,subcellular location:Present in the cytoplasm during cytokinesis.,subunit:Interacts with TAF3.,tissue specificity:Ubiquitously expressed in all tissues examined with highest levels in heart, lung, ovary, spleen and testes.,

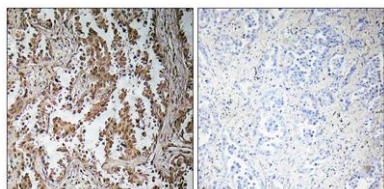


Western Blot analysis of HeLa cells using TBPL2 Polyclonal Antibody



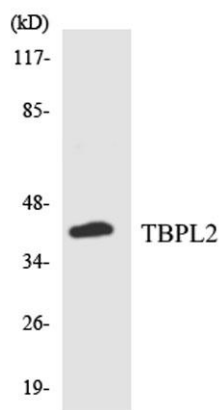
Western blot analysis of TBPL2 Antibody. The lane on the right is blocked with the TBPL2 peptide.

Immunohistochemistry analysis of paraffin-embedded human lung carcinoma, using TBPL2 Antibody. The lane on the right is blocked with the TBPL2 peptide.





**ELK Biotechnology**



Western blot analysis of the lysates from COLO205 cells using TBPL2 antibody.



+86-27-59760950

[ELKbio@ELKbiotech.com](mailto:ELKbio@ELKbiotech.com)

[www.elkbiotech.com](http://www.elkbiotech.com)

23-2, No.388 Gaoxin 2nd Road, Wuhan East Lake Hi-tech Development Zone, Hubei, P.R.C