



# Cleaved-Kininogen-1 HC (K380) rabbit pAb

Cat No.:ES6027

For research use only

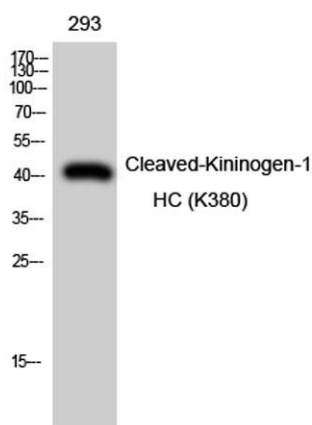
## Overview

<b>Product Name</b>	Cleaved-Kininogen-1 HC (K380) rabbit pAb
<b>Host species</b>	Rabbit
<b>Applications</b>	WB;ELISA
<b>Species Cross-Reactivity</b>	Human;Rat;Mouse;
<b>Recommended dilutions</b>	Western Blot: 1/500 - 1/2000. ELISA: 1/10000. Not yet tested in other applications.
<b>Immunogen</b>	Synthesized peptide derived from Cleaved-Kininogen-1 HC (K380) . at AA range: 300-380
<b>Specificity</b>	Cleaved-Kininogen-1 HC (K380) Polyclonal Antibody detects endogenous levels of fragment of activated Kininogen-1 HC protein resulting from cleavage adjacent to K380.
<b>Formulation</b>	Liquid in PBS containing 50% glycerol, 0.5% BSA and 0.02% sodium azide.
<b>Storage</b>	Store at -20°C. Avoid repeated freeze-thaw cycles.
<b>Protein Name</b>	Kininogen-1
<b>Gene Name</b>	KNG1
<b>Cellular localization</b>	Secreted, extracellular space.
<b>Purification</b>	The antibody was affinity-purified from rabbit antiserum by affinity-chromatography using epitope-specific immunogen.
<b>Clonality</b>	Polyclonal
<b>Concentration</b>	1 mg/ml
<b>Observed band</b>	41kD
<b>Human Gene ID</b>	3827
<b>Human Swiss-Prot Number</b>	P01042
<b>Alternative Names</b>	KNG1; BDK; KNG; Kininogen-1; Alpha-2-thiol proteinase inhibitor; Fitzgerald factor; High molecular weight kininogen; HMWK; Williams-Fitzgerald-Flaujeac factor
<b>Background</b>	This gene uses alternative splicing to generate two different proteins- high molecular weight kininogen





(HMWK) and low molecular weight kininogen (LMWK). HMWK is essential for blood coagulation and assembly of the kallikrein-kinin system. Also, bradykinin, a peptide causing numerous physiological effects, is released from HMWK. Bradykinin also functions as an antimicrobial peptide with antibacterial and antifungal activity. In contrast to HMWK, LMWK is not involved in blood coagulation. Three transcript variants encoding different isoforms have been found for this gene.[provided by RefSeq, Nov 2014],



Western Blot analysis of 293 cells using  
Cleaved-Kininogen-1 HC (K380) Polyclonal Antibody

