



TWIK-1 rabbit pAb

Cat No.:ES6010

For research use only

Overview

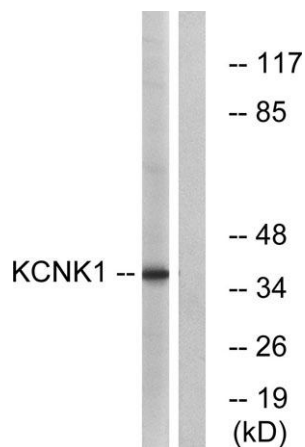
Product Name	TWIK-1 rabbit pAb
Host species	Rabbit
Applications	WB;ELISA
Species Cross-Reactivity	Human;Rat
Recommended dilutions	Western Blot: 1/500 - 1/2000. ELISA: 1/40000. Not yet tested in other applications.
Immunogen	The antiserum was produced against synthesized peptide derived from human KCNK1. AA range:287-336
Specificity	TWIK-1 Polyclonal Antibody detects endogenous levels of TWIK-1 protein.
Formulation	Liquid in PBS containing 50% glycerol, 0.5% BSA and 0.02% sodium azide.
Storage	Store at -20°C. Avoid repeated freeze-thaw cycles.
Protein Name	Potassium channel subfamily K member 1
Gene Name	KCNK1
Cellular localization	Cell membrane ; Multi-pass membrane protein . Recycling endosome . Cell junction, synapse, synaptic cell membrane . Cytoplasmic vesicle . Perikaryon . Cell projection, dendrite . Cell projection . Apical cell membrane ; Multi-pass membrane protein . The h
Purification	The antibody was affinity-purified from rabbit antiserum by affinity-chromatography using epitope-specific immunogen.
Clonality	Polyclonal
Concentration	1 mg/ml
Observed band	38kD
Human Gene ID	3775
Human Swiss-Prot Number	O00180
Alternative Names	KCNK1; HOHO1; KCNO1; TWIK1; Potassium channel subfamily K member 1; Inward rectifying potassium channel protein TWIK-1; Potassium channel KCNO1





Background

This gene encodes one of the members of the superfamily of potassium channel proteins containing two pore-forming P domains. The product of this gene has not been shown to be a functional channel, however, it may require other non-pore-forming proteins for activity. [provided by RefSeq, Jul 2008],



Western blot analysis of lysates from Jurkat cells, using KCNK1 Antibody. The lane on the right is blocked with the synthesized peptide.

