



Jun B rabbit pAb

Cat No.:ES5984

For research use only

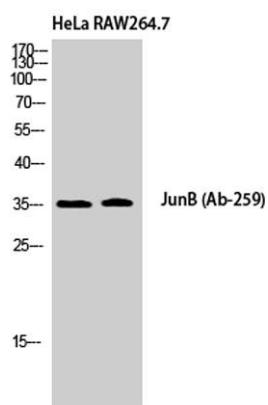
Overview

Product Name	Jun B rabbit pAb
Host species	Rabbit
Applications	WB;IHC;IF;IP;ELISA
Species Cross-Reactivity	Human;Mouse
Recommended dilutions	Western Blot: 1/500 - 1/2000. Immunohistochemistry: 1/100 - 1/300. Immunoprecipitation: 2-5 ug/mg lysate. ELISA: 1/20000. Not yet tested in other applications.
Immunogen	The antiserum was produced against synthesized peptide derived from human JunB. AA range:226-275
Specificity	Jun B Polyclonal Antibody detects endogenous levels of Jun B protein.
Formulation	Liquid in PBS containing 50% glycerol, 0.5% BSA and 0.02% sodium azide.
Storage	Store at -20°C. Avoid repeated freeze-thaw cycles.
Protein Name	Transcription factor jun-B
Gene Name	JUNB
Cellular localization	Nucleus.
Purification	The antibody was affinity-purified from rabbit antiserum by affinity-chromatography using epitope-specific immunogen.
Clonality	Polyclonal
Concentration	1 mg/ml
Observed band	36kD
Human Gene ID	3726
Human Swiss-Prot Number	P17275
Alternative Names	JUNB; Transcription factor jun-B
Background	function:Transcription factor involved in regulating gene activity following the primary growth factor response. Binds to the DNA sequence 5'-TGA[CG]TCA-3'.,induction:By growth factors.,similarity:Belongs to the bZIP



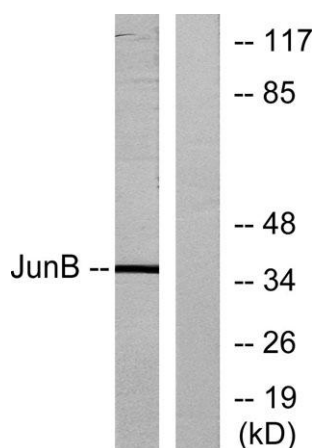
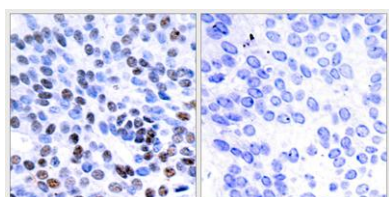


family, similarity: Belongs to the bZIP family. Jun subfamily, similarity: Contains 1 bZIP domain, subunit: Binds DNA as an homodimer or as an heterodimer with another member of the jun/fos family,



Western Blot analysis of HeLa RAW264.7 cells using Jun B Polyclonal Antibody cells nucleus extracted by Minute TM Cytoplasmic and Nuclear Fractionation kit (SC-003, Inventbiotech, MN, USA).

Immunohistochemistry analysis of paraffin-embedded human breast carcinoma tissue, using JunB Antibody. The picture on the right is blocked with the synthesized peptide.



Western blot analysis of lysates from HeLa cells, using JunB Antibody. The lane on the right is blocked with the synthesized peptide.

