



# eIF4B (phospho Ser422) rabbit pAb

Cat No.:ES5967

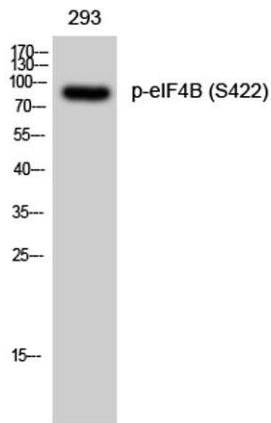
For research use only

## Overview

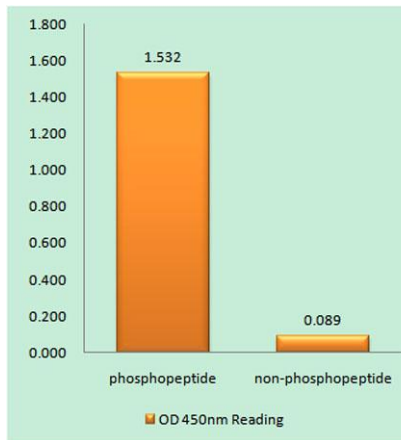
<b>Product Name</b>	eIF4B (phospho Ser422) rabbit pAb
<b>Host species</b>	Rabbit
<b>Applications</b>	WB;IHC;IF;ELISA
<b>Species Cross-Reactivity</b>	Human;Mouse
<b>Recommended dilutions</b>	Western Blot: 1/500 - 1/2000. Immunohistochemistry: 1/100 - 1/300. Immunofluorescence: 1/200 - 1/1000. ELISA: 1/40000. Not yet tested in other applications.
<b>Immunogen</b>	The antiserum was produced against synthesized peptide derived from human eIF4B around the phosphorylation site of Ser422. AA range:388-437
<b>Specificity</b>	Phospho-eIF4B (S422) Polyclonal Antibody detects endogenous levels of eIF4B protein only when phosphorylated at S422.
<b>Formulation</b>	Liquid in PBS containing 50% glycerol, 0.5% BSA and 0.02% sodium azide.
<b>Storage</b>	Store at -20°C. Avoid repeated freeze-thaw cycles.
<b>Protein Name</b>	Eukaryotic translation initiation factor 4B
<b>Gene Name</b>	EIF4B
<b>Cellular localization</b>	cytosol,polysome,eukaryotic translation initiation factor 4F complex,dendrite,neuronal cell body,
<b>Purification</b>	The antibody was affinity-purified from rabbit antiserum by affinity-chromatography using epitope-specific immunogen.
<b>Clonality</b>	Polyclonal
<b>Concentration</b>	1 mg/ml
<b>Observed band</b>	80kD
<b>Human Gene ID</b>	3716
<b>Human Swiss-Prot Number</b>	P23588
<b>Alternative Names</b>	EIF4B; Eukaryotic translation initiation factor 4B; eIF-4B
<b>Background</b>	function:Required for the binding of mRNA to ribosomes. Functions in close association with



EIF4-F and EIF4-A. Binds near the 5'-terminal cap of mRNA in presence of EIF-4F and ATP. Promotes the ATPase activity and the ATP-dependent RNA unwinding activity of both EIF4-A and EIF4-F.,similarity:Contains 1 RRM (RNA recognition motif) domain.,subunit:Self-associates and interacts with EIF3 p170 subunit.,

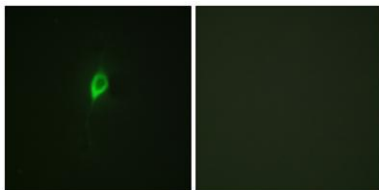


Western Blot analysis of 293 cells using Phospho-eIF4B (S422) Polyclonal Antibody diluted at 1:2000



Enzyme-Linked Immunosorbent Assay (Phospho-ELISA) for Immunogen Phosphopeptide (Phospho-left) and Non-Phosphopeptide (Phospho-right), using eIF4B (Phospho-Ser422) Antibody

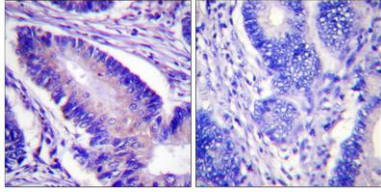
Immunofluorescence analysis of NIH/3T3 cells, using eIF4B (Phospho-Ser422) Antibody. The picture on the right is blocked with the phospho peptide.





**ELK Biotechnology**

Immunohistochemistry analysis of paraffin-embedded human colon carcinoma, using eIF4B (Phospho-Ser422) Antibody. The picture on the right is blocked with the phospho peptide.



+86-27-59760950

[ELKbio@ELKbiotech.com](mailto:ELKbio@ELKbiotech.com)

[www.elkbiotech.com](http://www.elkbiotech.com)

23-2, No.388 Gaoxin 2nd Road, Wuhan East Lake Hi-tech Development Zone, Hubei, P.R.C.