



# ITPK1 rabbit pAb

Cat No.:ES5961

For research use only

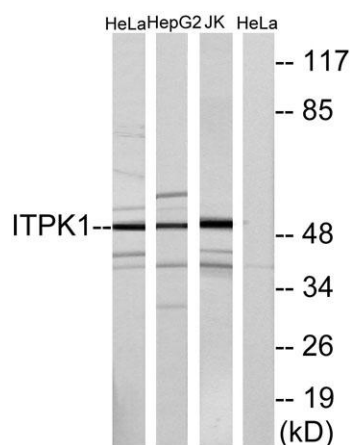
## Overview

<b>Product Name</b>	ITPK1 rabbit pAb
<b>Host species</b>	Rabbit
<b>Applications</b>	WB;ELISA;IHC
<b>Species Cross-Reactivity</b>	Human;Mouse
<b>Recommended dilutions</b>	WB 1:500-2000;IHC-p 1:50-300; ELISA 2000-20000
<b>Immunogen</b>	The antiserum was produced against synthesized peptide derived from human ITPK1. AA range:81-130
<b>Specificity</b>	ITPK1 Polyclonal Antibody detects endogenous levels of ITPK1 protein.
<b>Formulation</b>	Liquid in PBS containing 50% glycerol, 0.5% BSA and 0.02% sodium azide.
<b>Storage</b>	Store at -20°C. Avoid repeated freeze-thaw cycles.
<b>Protein Name</b>	Inositol-tetrakisphosphate 1-kinase
<b>Gene Name</b>	ITPK1
<b>Cellular localization</b>	intracellular,cytosol,apical plasma membrane,
<b>Purification</b>	The antibody was affinity-purified from rabbit antiserum by affinity-chromatography using epitope-specific immunogen.
<b>Clonality</b>	Polyclonal
<b>Concentration</b>	1 mg/ml
<b>Observed band</b>	50kD
<b>Human Gene ID</b>	3705
<b>Human Swiss-Prot Number</b>	Q13572
<b>Alternative Names</b>	ITPK1; Inositol-tetrakisphosphate 1-kinase; Inositol 1; 3,4-trisphosphate 5/6-kinase; Inositol-triphosphate 5/6-kinase; Ins(1,3,4)P(3) 5/6-kinase
<b>Background</b>	This gene encodes an enzyme that belongs to the inositol 1,3,4-trisphosphate 5/6-kinase family. This enzyme regulates the synthesis of inositol tetrakisphosphate, and downstream products, inositol pentakisphosphate and inositol hexakisphosphate.

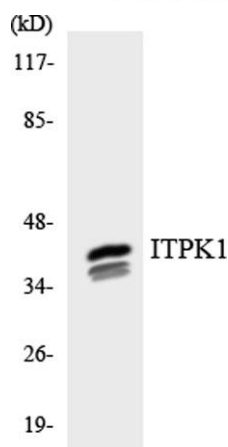




Inositol metabolism plays a role in the development of the neural tube. Disruptions in this gene are thought to be associated with neural tube defects. A pseudogene of this gene has been identified on chromosome X. [provided by RefSeq, Jul 2016],



Western blot analysis of the lysates from HepG2 cells using ITPK1 antibody.



Immunohistochemical analysis of paraffin-embedded human liver cancer. 1, Antibody was diluted at 1:200(4° overnight). 2, Tris-EDTA,pH9.0 was used for antigen retrieval. 3,Secondary antibody was diluted at 1:200(room temperature, 45min).

