



# Emt (phospho Tyr512) rabbit pAb

Cat No.:ES5960

For research use only

## Overview

<b>Product Name</b>	Emt (phospho Tyr512) rabbit pAb
<b>Host species</b>	Rabbit
<b>Applications</b>	WB;IHC;IF;ELISA
<b>Species Cross-Reactivity</b>	Human;Mouse
<b>Recommended dilutions</b>	WB 1:500-2000 ,Immunohistochemistry: 1/100 - 1/300. ELISA: 1/5000. Not yet tested in other applications.
<b>Immunogen</b>	The antiserum was produced against synthesized peptide derived from human ITK around the phosphorylation site of Tyr512. AA range:478-527
<b>Specificity</b>	Phospho-Emt (Y512) Polyclonal Antibody detects endogenous levels of Emt protein only when phosphorylated at Y512.
<b>Formulation</b>	Liquid in PBS containing 50% glycerol, 0.5% BSA and 0.02% sodium azide.
<b>Storage</b>	Store at -20°C. Avoid repeated freeze-thaw cycles.
<b>Protein Name</b>	Tyrosine-protein kinase ITK/TSK
<b>Gene Name</b>	ITK
<b>Cellular localization</b>	Cytoplasm . Nucleus . Localizes in the vicinity of cell surface receptors in the plasma membrane after receptor stimulation.
<b>Purification</b>	The antibody was affinity-purified from rabbit antiserum by affinity-chromatography using epitope-specific immunogen.
<b>Clonality</b>	Polyclonal
<b>Concentration</b>	1 mg/ml
<b>Observed band</b>	72kD
<b>Human Gene ID</b>	3702
<b>Human Swiss-Prot Number</b>	Q08881
<b>Alternative Names</b>	ITK; EMT; LYK; Tyrosine-protein kinase ITK/TSK; Interleukin-2-inducible T-cell kinase; IL-2-inducible T-cell kinase; Kinase EMT; T-cell-specific kinase; Tyrosine-protein kinase Lyk

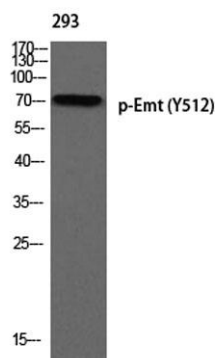




## Background

This gene encodes an intracellular tyrosine kinase expressed in T-cells. The protein contains both SH2 and SH3 domains which are often found in intracellular kinases. It is thought to play a role in T-cell proliferation and differentiation. [provided by RefSeq, Jul 2008],

Western blot analysis of 293 using p-Emt (Y512) antibody.



Immunohistochemical analysis of paraffin-embedded Human testis. Antibody was diluted at 1:100(4° overnight). High-pressure and temperature Tris-EDTA,pH8.0 was used for antigen retrieval. Negative control (right) obtained from antibody was pre-absorbed by

