



Cleaved-ITI-H1 (D672) rabbit pAb

Cat No.:ES5958

For research use only

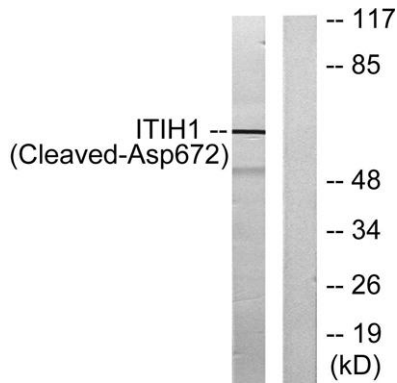
Overview

Product Name	Cleaved-ITI-H1 (D672) rabbit pAb
Host species	Rabbit
Applications	WB;ELISA
Species Cross-Reactivity	Human;Mouse
Recommended dilutions	Western Blot: 1/500 - 1/2000. ELISA: 1/20000. Not yet tested in other applications.
Immunogen	The antiserum was produced against synthesized peptide derived from human ITIH1. AA range:623-672
Specificity	Cleaved-ITI-H1 (D672) Polyclonal Antibody detects endogenous levels of fragment of activated ITI-H1 protein resulting from cleavage adjacent to D672.
Formulation	Liquid in PBS containing 50% glycerol, 0.5% BSA and 0.02% sodium azide.
Storage	Store at -20°C. Avoid repeated freeze-thaw cycles.
Protein Name	Inter-alpha-trypsin inhibitor heavy chain H1
Gene Name	ITIH1
Cellular localization	Secreted.
Purification	The antibody was affinity-purified from rabbit antiserum by affinity-chromatography using epitope-specific immunogen.
Clonality	Polyclonal
Concentration	1 mg/ml
Observed band	71kD
Human Gene ID	3697
Human Swiss-Prot Number	P19827
Alternative Names	ITIH1; IGHEP1; Inter-alpha-trypsin inhibitor heavy chain H1; ITI heavy chain H1; ITI-HC1; Inter-alpha-inhibitor heavy chain 1; Inter-alpha-trypsin inhibitor complex component III; Serum-derived hyaluronan-associated protein; SHAP
Background	This gene encodes a member of the inter-alpha-trypsin inhibitor family of proteins.





Alternative splicing results in multiple transcript variants, at least one of which encodes a preproprotein that is proteolytically processed to generate the heavy chain of the inter-alpha-trypsin inhibitor complex, which is secreted by hepatocytes into the blood. The heavy chain also interacts with hyaluronan, and this interaction may play a role in ovulation and fertilization, and has been implicated in multiple inflammatory diseases. This gene is present in a gene cluster on chromosome 3.
[provided by RefSeq, Nov 2015],



Western blot analysis of lysates from Jurkat cells, treated with etoposide 25uM 24h, using ITIH1 (Cleaved-Asp672) Antibody. The lane on the right is blocked with the synthesized peptide.

