



Integrin β 3 (phospho Tyr773) rabbit pAb

Cat No.:ES5956

For research use only

Overview

| | |
|---------------------------------|---|
| Product Name | Integrin β 3 (phospho Tyr773) rabbit pAb |
| Host species | Rabbit |
| Applications | WB;IHC;IF;ELISA |
| Species Cross-Reactivity | Human;Mouse;Rat |
| Recommended dilutions | Western Blot: 1/500 - 1/2000. Immunohistochemistry: 1/100 - 1/300. ELISA: 1/10000. Not yet tested in other applications. |
| Immunogen | The antiserum was produced against synthesized peptide derived from human Integrin beta3 around the phosphorylation site of Tyr773. AA range:739-788 |
| Specificity | Phospho-Integrin β 3 (Y773) Polyclonal Antibody detects endogenous levels of Integrin β 3 protein only when phosphorylated at Y773. |
| Formulation | Liquid in PBS containing 50% glycerol, 0.5% BSA and 0.02% sodium azide. |
| Storage | Store at -20°C. Avoid repeated freeze-thaw cycles. |
| Protein Name | Integrin beta-3 |
| Gene Name | ITGB3 |
| Cellular localization | Cell membrane ; Single-pass type I membrane protein . Cell projection, lamellipodium membrane . Cell junction, focal adhesion . Cell junction, synapse, postsynaptic cell membrane ; Single-pass type I membrane protein . Cell junction, synapse . |
| Purification | The antibody was affinity-purified from rabbit antiserum by affinity-chromatography using epitope-specific immunogen. |
| Clonality | Polyclonal |
| Concentration | 1 mg/ml |
| Observed band | 130kD |
| Human Gene ID | 3690 |
| Human Swiss-Prot Number | P05106 |
| Alternative Names | ITGB3; GP3A; Integrin beta-3; Platelet membrane |



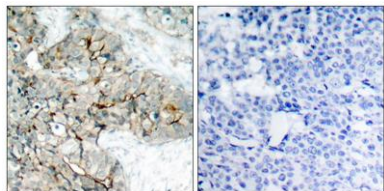


Background

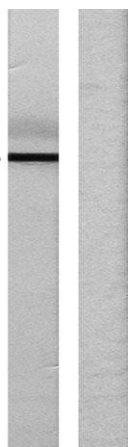
glycoprotein IIIa; GPIIIa; CD antigen CD61

The ITGB3 protein product is the integrin beta chain beta 3. Integrins are integral cell-surface proteins composed of an alpha chain and a beta chain. A given chain may combine with multiple partners resulting in different integrins. Integrin beta 3 is found along with the alpha IIb chain in platelets. Integrins are known to participate in cell adhesion as well as cell-surface mediated signalling. [provided by RefSeq, Jul 2008],

Immunohistochemistry analysis of paraffin-embedded human breast carcinoma, using Integrin beta3 (Phospho-Tyr773) Antibody. The picture on the right is blocked with the phospho peptide.



INTEGRIN B3 --
(pTyr773)



Western blot analysis of lysates from HL-60 cells treated with H₂O₂, using Integrin beta3 (Phospho-Tyr773) Antibody. The lane on the right is blocked with the phospho peptide.

