



A-Raf (phospho Tyr302) rabbit pAb

Cat No.:ES5953

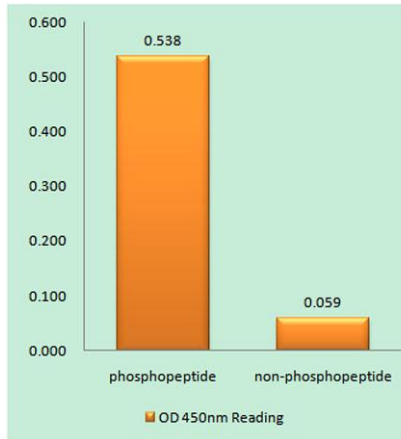
For research use only

Overview

Product Name	A-Raf (phospho Tyr302) rabbit pAb
Host species	Rabbit
Applications	WB;IHC;IF;ELISA
Species Cross-Reactivity	Human;Mouse;Rat
Recommended dilutions	Western Blot: 1/500 - 1/2000. Immunohistochemistry: 1/100 - 1/300. Immunofluorescence: 1/200 - 1/1000. ELISA: 1/20000. Not yet tested in other applications.
Immunogen	The antiserum was produced against synthesized peptide derived from human A-RAF around the phosphorylation site of Tyr302. AA range:276-325
Specificity	Phospho-A-Raf (Y302) Polyclonal Antibody detects endogenous levels of A-Raf protein only when phosphorylated at Y302.
Formulation	Liquid in PBS containing 50% glycerol, 0.5% BSA and 0.02% sodium azide.
Storage	Store at -20°C. Avoid repeated freeze-thaw cycles.
Protein Name	Serine/threonine-protein kinase A-Raf
Gene Name	ARAF
Cellular localization	intracellular,mitochondrion,cytosol,
Purification	The antibody was affinity-purified from rabbit antiserum by affinity-chromatography using epitope-specific immunogen.
Clonality	Polyclonal
Concentration	1 mg/ml
Observed band	68kD
Human Gene ID	369
Human Swiss-Prot Number	P10398
Alternative Names	ARAF; ARAF1; PKS; PKS2; Serine/threonine-protein kinase A-Raf; Proto-oncogene A-Raf; Proto-oncogene A-Raf-1; Proto-oncogene Pks
Background	This proto-oncogene belongs to the RAF subfamily of the Ser/Thr protein kinase family, and maybe

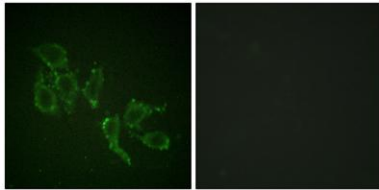


involved in cell growth and development. Alternatively spliced transcript variants encoding different isoforms have been found for this gene. [provided by RefSeq, Jan 2012],

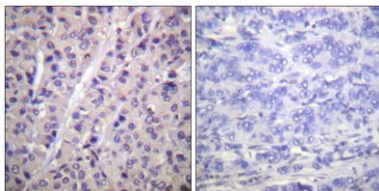


Enzyme-Linked Immunosorbent Assay (Phospho-ELISA) for Immunogen Phosphopeptide (Phospho-left) and Non-Phosphopeptide (Phospho-right), using A-RAF (Phospho-Tyr302) Antibody

Immunofluorescence analysis of HepG2 cells, using A-RAF (Phospho-Tyr302) Antibody. The picture on the right is blocked with the phospho peptide.



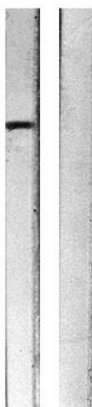
Immunohistochemistry analysis of paraffin-embedded human breast carcinoma, using A-RAF (Phospho-Tyr302) Antibody. The picture on the right is blocked with the phospho peptide.





ELK Biotechnology

A-RAF
(pTyr301/302)



Western blot analysis of lysates from HeLa cells treated with PMA 125ng/ml 30', using A-RAF (Phospho-Tyr302) Antibody. The lane on the right is blocked with the phospho peptide.



+86-27-59760950

ELKbio@ELKbiotech.com

www.elkbiotech.com

23-2, No.388 Gaoxin 2nd Road,Wuhan East Lake Hi-tech Development Zone, Hubei , P.R.C