



IRF-3 rabbit pAb

Cat No.:ES5924

For research use only

Overview

Product Name	IRF-3 rabbit pAb
Host species	Rabbit
Applications	WB;IHC;IF;ELISA
Species Cross-Reactivity	Human;Rat;Mouse;;Pig
Recommended dilutions	Western Blot: 1/500 - 1/2000. Immunohistochemistry: 1/100 - 1/300. Immunofluorescence: 1/200 - 1/1000. ELISA: 1/40000. Not yet tested in other applications.
Immunogen	The antiserum was produced against synthesized peptide derived from human IRF3. AA range:351-400
Specificity	IRF-3 Polyclonal Antibody detects endogenous levels of IRF-3 protein.
Formulation	Liquid in PBS containing 50% glycerol, 0.5% BSA and 0.02% sodium azide.
Storage	Store at -20°C. Avoid repeated freeze-thaw cycles.
Protein Name	Interferon regulatory factor 3
Gene Name	IRF3
Cellular localization	Cytoplasm . Nucleus . Mitochondrion . Shuttles between cytoplasmic and nuclear compartments, with export being the prevailing effect (PubMed:10805757). When activated, IRF3 interaction with CREBBP prevents its export to the cytoplasm (PubMed:10805757). Re
Purification	The antibody was affinity-purified from rabbit antiserum by affinity-chromatography using epitope-specific immunogen.
Clonality	Polyclonal
Concentration	1 mg/ml
Observed band	48-55kd
Human Gene ID	3661
Human Swiss-Prot Number	Q14653
Alternative Names	IRF3; Interferon regulatory factor 3; IRF-3

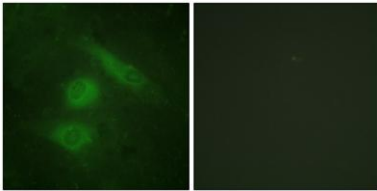




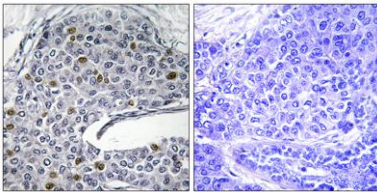
Background

This gene encodes a member of the interferon regulatory transcription factor (IRF) family. The encoded protein is found in an inactive cytoplasmic form that upon serine/threonine phosphorylation forms a complex with CREBBP. This complex translocates to the nucleus and activates the transcription of interferons alpha and beta, as well as other interferon-induced genes. Alternatively spliced transcript variants encoding multiple isoforms have been observed for this gene. [provided by RefSeq, Nov 2011],

Immunofluorescence analysis of HeLa cells, using IRF3 Antibody. The picture on the right is blocked with the synthesized peptide.

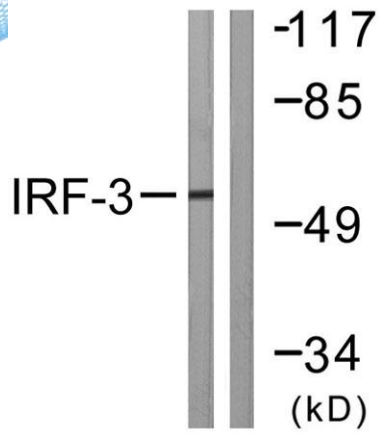


Immunohistochemistry analysis of paraffin-embedded human lung carcinoma tissue, using IRF3 Antibody. The picture on the right is blocked with the synthesized peptide.





ELK Biotechnology



Western blot analysis of lysates from K562 cells, using IRF3 Antibody. The lane on the right is blocked with the synthesized peptide.



+86-27-59760950

ELKbio@ELKbiotech.com

www.elkbiotech.com

23-2, No.388 Gaoxin 2nd Road,Wuhan East Lake Hi-tech Development Zone, Hubei , P.R.C