



# ALS rabbit pAb

Cat No.:ES5855

For research use only

## Overview

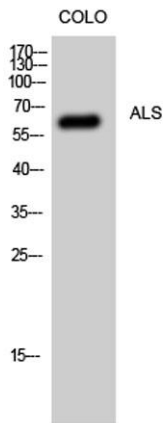
<b>Product Name</b>	ALS rabbit pAb
<b>Host species</b>	Rabbit
<b>Applications</b>	WB;ELISA
<b>Species Cross-Reactivity</b>	Human;Rat;Mouse;
<b>Recommended dilutions</b>	Western Blot: 1/500 - 1/2000. ELISA: 1/10000. Not yet tested in other applications.
<b>Immunogen</b>	The antiserum was produced against synthesized peptide derived from human IGFALS. AA range:303-352
<b>Specificity</b>	ALS Polyclonal Antibody detects endogenous levels of ALS protein.
<b>Formulation</b>	Liquid in PBS containing 50% glycerol, 0.5% BSA and 0.02% sodium azide.
<b>Storage</b>	Store at -20°C. Avoid repeated freeze-thaw cycles.
<b>Protein Name</b>	Insulin-like growth factor-binding protein complex acid labile subunit
<b>Gene Name</b>	IGFALS
<b>Cellular localization</b>	Secreted, extracellular space.
<b>Purification</b>	The antibody was affinity-purified from rabbit antiserum by affinity-chromatography using epitope-specific immunogen.
<b>Clonality</b>	Polyclonal
<b>Concentration</b>	1 mg/ml
<b>Observed band</b>	66kD
<b>Human Gene ID</b>	3483
<b>Human Swiss-Prot Number</b>	P35858
<b>Alternative Names</b>	IGFALS; ALS; Insulin-like growth factor-binding protein complex acid labile subunit; ALS
<b>Background</b>	The protein encoded by this gene is a serum protein that binds insulin-like growth factors, increasing their half-life and their vascular localization. Production of the encoded protein, which contains twenty leucine-rich repeats, is stimulated by growth



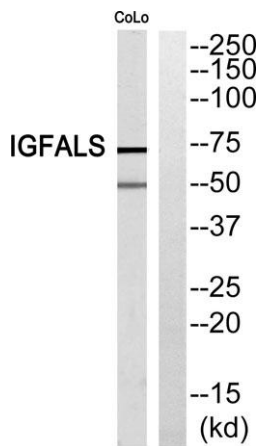


hormone. Defects in this gene are a cause of acid-labile subunit deficiency, which manifests itself in a delayed and slow puberty. Three transcript variants encoding two different isoforms have been found for this gene. [provided by RefSeq, Mar 2009],

Western Blot analysis of CoLo cells using ALS Polyclonal Antibody



Western blot analysis of IGFALS Antibody. The lane on the right is blocked with the IGFALS peptide.



Western blot analysis of the lysates from RAW264.7 cells using IGFALS antibody.

