



ApoE rabbit pAb

Cat No.:ES5846

For research use only

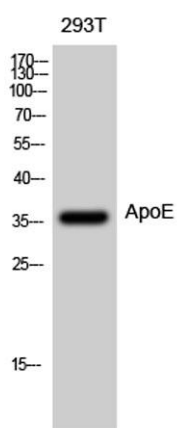
Overview

| | |
|---------------------------------|---|
| Product Name | ApoE rabbit pAb |
| Host species | Rabbit |
| Applications | WB;IHC;IF;ELISA |
| Species Cross-Reactivity | Human;Mouse;Rat |
| Recommended dilutions | Western Blot: 1/500 - 1/2000. Immunohistochemistry: 1/100 - 1/300. ELISA: 1/10000. Not yet tested in other applications. |
| Immunogen | The antiserum was produced against synthesized peptide derived from human ApoE. AA range:37-86 |
| Specificity | ApoE Polyclonal Antibody detects endogenous levels of ApoE protein. |
| Formulation | Liquid in PBS containing 50% glycerol, 0.5% BSA and 0.02% sodium azide. |
| Storage | Store at -20°C. Avoid repeated freeze-thaw cycles. |
| Protein Name | Apolipoprotein E |
| Gene Name | APOE |
| Cellular localization | Secreted . Secreted, extracellular space . Secreted, extracellular space, extracellular matrix . In the plasma, APOE is associated with chylomicrons, chylomicrons remnants, VLDL, LDL and HDL lipoproteins (PubMed:1911868, PubMed:8340399). Lipid poor oligom |
| Purification | The antibody was affinity-purified from rabbit antiserum by affinity-chromatography using epitope-specific immunogen. |
| Clonality | Polyclonal |
| Concentration | 1 mg/ml |
| Observed band | 36kD |
| Human Gene ID | 348 |
| Human Swiss-Prot Number | P02649 |
| Alternative Names | APOE; Apolipoprotein E; Apo-E |
| Background | The protein encoded by this gene is a major apoprotein of the chylomicron. It binds to a specific |



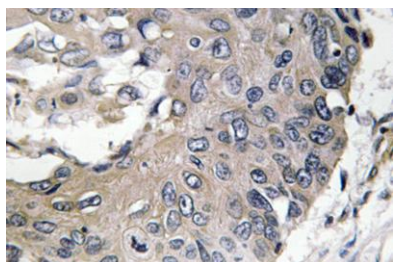


liver and peripheral cell receptor, and is essential for the normal catabolism of triglyceride-rich lipoprotein constituents. This gene maps to chromosome 19 in a cluster with the related apolipoprotein C1 and C2 genes. Mutations in this gene result in familial dysbetalipoproteinemia, or type III hyperlipoproteinemia (HLP III), in which increased plasma cholesterol and triglycerides are the consequence of impaired clearance of chylomicron and VLDL remnants. [provided by RefSeq, Jun 2016],



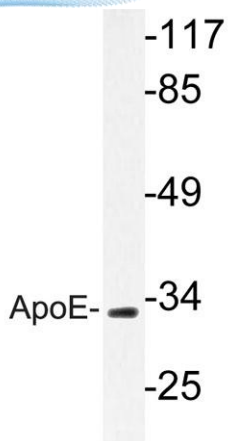
Western Blot analysis of 293T cells using ApoE Polyclonal Antibody diluted at 1:500

Immunohistochemistry analysis of ApoE antibody in paraffin-embedded human lung carcinoma tissue.





ELK Biotechnology



Western blot analysis of lysate from RAW264.7 cells, using ApoE antibody.



+86-27-59760950

ELKbio@ELKbiotech.com

www.elkbiotech.com

23-2, No.388 Gaoxin 2nd Road, Wuhan East Lake Hi-tech Development Zone, Hubei, P.R.C