



IFN- α / β R α rabbit pAb

Cat No.:ES5837

For research use only

Overview

Product Name	IFN- α / β R α rabbit pAb
Host species	Rabbit
Applications	IHC;IF;ELISA
Species Cross-Reactivity	Human;Rat;Mouse;
Recommended dilutions	WB 1:500-2000 ,Immunohistochemistry: 1/100 - 1/300. Immunofluorescence: 1/200 - 1/1000. ELISA: 1/20000. Not yet tested in other applications.
Immunogen	The antiserum was produced against synthesized peptide derived from human Interferon-alpha/beta Receptor alpha chain. AA range:436-485
Specificity	IFN- α / β R α Polyclonal Antibody detects endogenous levels of IFN- α / β R α protein.
Formulation	Liquid in PBS containing 50% glycerol, 0.5% BSA and 0.02% sodium azide.
Storage	Store at -20°C. Avoid repeated freeze-thaw cycles.
Protein Name	Interferon alpha/beta receptor 1
Gene Name	IFNAR1
Cellular localization	[Isoform 1]: Cell membrane ; Single-pass type I membrane protein . Late endosome . Lysosome . Interferon binding triggers internalization of the receptor from the cell membrane into endosomes and then into lysosomes. .
Purification	The antibody was affinity-purified from rabbit antiserum by affinity-chromatography using epitope-specific immunogen.
Clonality	Polyclonal
Concentration	1 mg/ml
Observed band	
Human Gene ID	3454
Human Swiss-Prot Number	P17181
Alternative Names	IFNAR1; IFNAR; Interferon alpha/beta receptor 1; IFN-R-1; IFN-alpha/beta receptor 1; Cytokine receptor class-II member 1; Cytokine receptor family





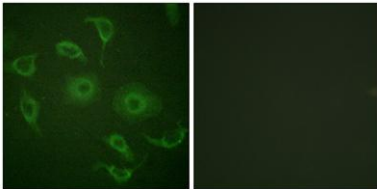
Background

2 member 1; CRF2-1; Type I interferon receptor 1

The protein encoded by this gene is a type I membrane protein that forms one of the two chains of a receptor for interferons alpha and beta. Binding and activation of the receptor stimulates Janus protein kinases, which in turn phosphorylate several proteins, including STAT1 and STAT2. The encoded protein also functions as an antiviral factor.

[provided by RefSeq, Jul 2008],

Immunofluorescence analysis of HepG2 cells, using Interferon-alpha/beta Receptor alpha chain Antibody. The picture on the right is blocked with the synthesized peptide.



Immunohistochemistry analysis of paraffin-embedded human brain tissue, using Interferon-alpha/beta Receptor alpha chain Antibody. The picture on the right is blocked with the synthesized peptide.

