



IFN- α / β R α (phospho Tyr466) rabbit pAb

Cat No.:ES5836

For research use only

Overview

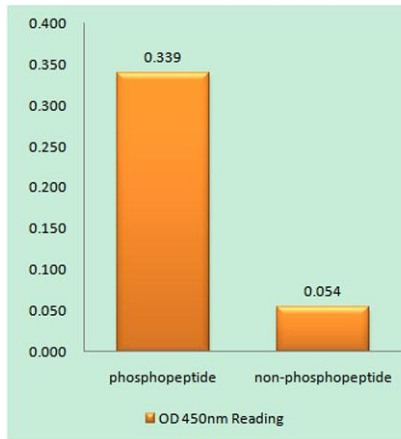
| | |
|---------------------------------|--|
| Product Name | IFN- α / β R α (phospho Tyr466) rabbit pAb |
| Host species | Rabbit |
| Applications | WB;IHC;IF;ELISA |
| Species Cross-Reactivity | Human;Rat;Mouse; |
| Recommended dilutions | Western Blot: 1/500 - 1/2000. Immunohistochemistry: 1/100 - 1/300. ELISA: 1/10000. Not yet tested in other applications. |
| Immunogen | The antiserum was produced against synthesized peptide derived from human Interferon-alpha/beta Receptor alpha around the phosphorylation site of Tyr466. AA range:436-485 |
| Specificity | Phospho-IFN- α / β R α (Y466) Polyclonal Antibody detects endogenous levels of IFN- α / β R α protein only when phosphorylated at Y466. |
| Formulation | Liquid in PBS containing 50% glycerol, 0.5% BSA and 0.02% sodium azide. |
| Storage | Store at -20°C. Avoid repeated freeze-thaw cycles. |
| Protein Name | Interferon alpha/beta receptor 1 |
| Gene Name | IFNAR1 |
| Cellular localization | [Isoform 1]: Cell membrane ; Single-pass type I membrane protein . Late endosome . Lysosome . Interferon binding triggers internalization of the receptor from the cell membrane into endosomes and then into lysosomes. . |
| Purification | The antibody was affinity-purified from rabbit antiserum by affinity-chromatography using epitope-specific immunogen. |
| Clonality | Polyclonal |
| Concentration | 1 mg/ml |
| Observed band | 63kD |
| Human Gene ID | 3454 |
| Human Swiss-Prot Number | P17181 |
| Alternative Names | IFNAR1; IFNAR; Interferon alpha/beta receptor 1; |



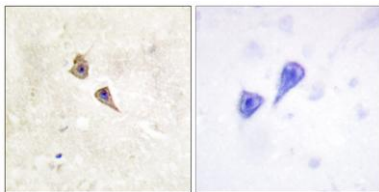


Background

IFN-R-1; IFN-alpha/beta receptor 1; Cytokine receptor class-II member 1; Cytokine receptor family 2 member 1; CRF2-1; Type I interferon receptor 1
The protein encoded by this gene is a type I membrane protein that forms one of the two chains of a receptor for interferons alpha and beta. Binding and activation of the receptor stimulates Janus protein kinases, which in turn phosphorylate several proteins, including STAT1 and STAT2. The encoded protein also functions as an antiviral factor.
[provided by RefSeq, Jul 2008],



Enzyme-Linked Immunosorbent Assay (Phospho-ELISA) for Immunogen Phosphopeptide (Phospho-left) and Non-Phosphopeptide (Phospho-right), using Interferon-alpha/beta Receptor alpha (Phospho-Tyr466) Antibody



Immunohistochemistry analysis of paraffin-embedded human brain, using Interferon-alpha/beta Receptor alpha (Phospho-Tyr466) Antibody. The picture on the right is blocked with the phospho peptide.

