



CCP3 rabbit pAb

Cat No.:ES5816

For research use only

Overview

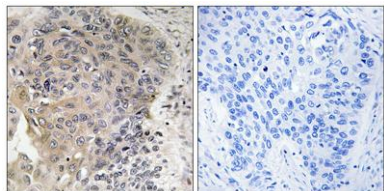
Product Name	CCP3 rabbit pAb
Host species	Rabbit
Applications	IHC;IF;ELISA
Species Cross-Reactivity	Human;Rat;Mouse;
Recommended dilutions	Immunohistochemistry: 1/100 - 1/300. ELISA: 1/20000. Not yet tested in other applications.
Immunogen	The antiserum was produced against synthesized peptide derived from human AGBL3. AA range:611-660
Specificity	CCP3 Polyclonal Antibody detects endogenous levels of CCP3 protein.
Formulation	Liquid in PBS containing 50% glycerol, 0.5% BSA and 0.02% sodium azide.
Storage	Store at -20°C. Avoid repeated freeze-thaw cycles.
Protein Name	Cytosolic carboxypeptidase 3
Gene Name	AGBL3
Cellular localization	Cytoplasm, cytosol .
Purification	The antibody was affinity-purified from rabbit antiserum by affinity-chromatography using epitope-specific immunogen.
Clonality	Polyclonal
Concentration	1 mg/ml
Observed band	
Human Gene ID	340351
Human Swiss-Prot Number	Q8NEM8
Alternative Names	AGBL3; CCP3; Cytosolic carboxypeptidase 3; ATP/GTP-binding protein-like 3
Background	cofactor: Binds 1 zinc ion per subunit.,function: May play a role in the processing of tubulin.,similarity: Belongs to the peptidase M14 family.,





ELK Biotechnology

Immunohistochemistry analysis of paraffin-embedded human lung carcinoma, using CBCP3 Antibody. The picture on the right is blocked with the synthesized peptide.



+86-27-59760950

ELKbio@ELKbiotech.com

www.elkbiotech.com

23-2, No.388 Gaoxin 2nd Road, Wuhan East Lake Hi-tech Development Zone, Hubei, P.R.C