



POTE15 rabbit pAb

Cat No.:ES5813

For research use only

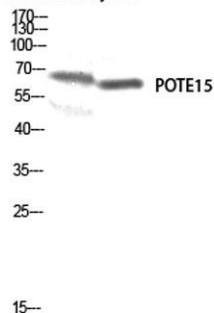
Overview

Product Name	POTE15 rabbit pAb
Host species	Rabbit
Applications	WB;IHC;IF;ELISA
Species Cross-Reactivity	Human;Rat;Mouse;
Recommended dilutions	Western Blot: 1/500 - 1/2000. Immunohistochemistry: 1/100 - 1/300. ELISA: 1/5000. Not yet tested in other applications.
Immunogen	The antiserum was produced against synthesized peptide derived from human A26B1. AA range:481-530
Specificity	POTE15 Polyclonal Antibody detects endogenous levels of POTE15 protein.
Formulation	Liquid in PBS containing 50% glycerol, 0.5% BSA and 0.02% sodium azide.
Storage	Store at -20°C. Avoid repeated freeze-thaw cycles.
Protein Name	POTE ankyrin domain family member B
Gene Name	POTEB
Cellular localization	
Purification	The antibody was affinity-purified from rabbit antiserum by affinity-chromatography using epitope-specific immunogen.
Clonality	Polyclonal
Concentration	1 mg/ml
Observed band	60kD
Human Gene ID	339010
Human Swiss-Prot Number	Q6S5H4
Alternative Names	POTEB; A26B1; POTE15; POTE ankyrin domain family member B; ANKRD26-like family B member 1; Prostate; ovary, testis-expressed protein on chromosome 15; POTE-15
Background	POTEB (POTE Ankyrin Domain Family Member B) is a Protein Coding gene. An important paralog of this gene is ANKRD18A.

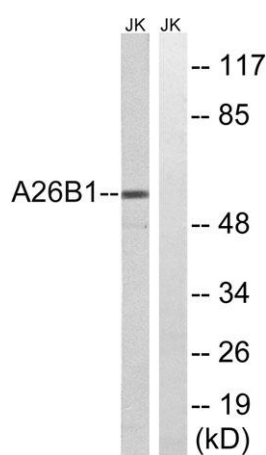




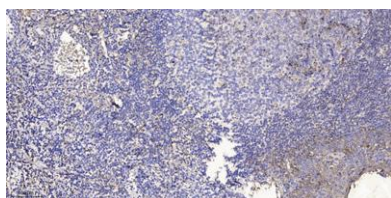
Mouse-kidney 3T3



Western blot analysis of Mouse-kidney 3T3 lysis using POTE15 antibody. Antibody was diluted at 1:500



Western blot analysis of lysates from Jurkat cells, using A26B1 Antibody. The lane on the right is blocked with the synthesized peptide.



Immunohistochemical analysis of paraffin-embedded human tonsil. 1, Antibody was diluted at 1:200(4° overnight). 2, Tris-EDTA,pH9.0 was used for antigen retrieval. 3,Secondary antibody was diluted at 1:200(room temperature, 30min).

