



HSF1 (phospho Ser307) rabbit pAb

Cat No.:ES5781

For research use only

Overview

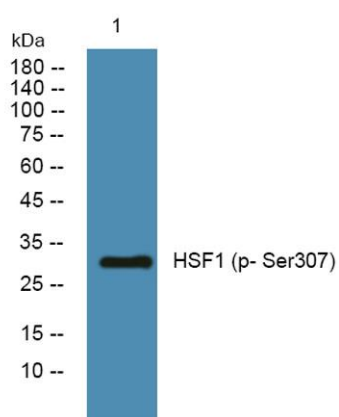
Product Name	HSF1 (phospho Ser307) rabbit pAb
Host species	Rabbit
Applications	WB;IF;ELISA
Species Cross-Reactivity	Human;Rat;Mouse;
Recommended dilutions	Western Blot: 1/500 - 1/2000. Immunofluorescence: 1/200 - 1/1000. ELISA: 1/5000. Not yet tested in other applications.
Immunogen	The antiserum was produced against synthesized peptide derived from human HSF1 around the phosphorylation site of Ser307. AA range:273-322
Specificity	Phospho-HSF1 (S307) Polyclonal Antibody detects endogenous levels of HSF1 protein only when phosphorylated at S307.
Formulation	Liquid in PBS containing 50% glycerol, 0.5% BSA and 0.02% sodium azide.
Storage	Store at -20°C. Avoid repeated freeze-thaw cycles.
Protein Name	Heat shock factor protein 1
Gene Name	HSF1
Cellular localization	Nucleus . Cytoplasm . Nucleus, nucleoplasm . Cytoplasm, perinuclear region . Cytoplasm, cytoskeleton, spindle pole . Cytoplasm, cytoskeleton, microtubule organizing center, centrosome . Chromosome, centromere, kinetochore . The monomeric form is cytoplasm
Purification	The antibody was affinity-purified from rabbit antiserum by affinity-chromatography using epitope-specific immunogen.
Clonality	Polyclonal
Concentration	1 mg/ml
Observed band	30kD
Human Gene ID	3297
Human Swiss-Prot Number	Q00613
Alternative Names	HSF1; HSTF1; Heat shock factor protein 1; HSF 1;





Background

Heat shock transcription factor 1; HSTF 1
heat shock transcription factor 1(HSF1) Homo sapiens The product of this gene is a transcription factor that is rapidly induced after temperature stress and binds heat shock promoter elements (HSE). This protein plays a role in the regulation of lifespan. Expression of this gene is repressed by phosphorylation, which promotes binding by heat shock protein 90. [provided by RefSeq, Aug 2016],



Western blot analysis of lysates from A431 cells, primary antibody was diluted at 1:1000, 4° over night

