



HSF1 (phospho Ser303) rabbit pAb

Cat No.:ES5778

For research use only

Overview

Product Name	HSF1 (phospho Ser303) rabbit pAb
Host species	Rabbit
Applications	WB;IHC;IF;ELISA
Species Cross-Reactivity	Human;Mouse
Recommended dilutions	Western Blot: 1/500 - 1/2000. Immunohistochemistry: 1/100 - 1/300. Immunofluorescence: 1/200 - 1/1000. ELISA: 1/20000. Not yet tested in other applications.
Immunogen	The antiserum was produced against synthesized peptide derived from human HSF1 around the phosphorylation site of Ser303. AA range:270-319
Specificity	Phospho-HSF1 (S303) Polyclonal Antibody detects endogenous levels of HSF1 protein only when phosphorylated at S303.
Formulation	Liquid in PBS containing 50% glycerol, 0.5% BSA and 0.02% sodium azide.
Storage	Store at -20°C. Avoid repeated freeze-thaw cycles.
Protein Name	Heat shock factor protein 1
Gene Name	HSF1
Cellular localization	Nucleus . Cytoplasm . Nucleus, nucleoplasm . Cytoplasm, perinuclear region . Cytoplasm, cytoskeleton, spindle pole . Cytoplasm, cytoskeleton, microtubule organizing center, centrosome . Chromosome, centromere, kinetochore . The monomeric form is cytoplasm
Purification	The antibody was affinity-purified from rabbit antiserum by affinity-chromatography using epitope-specific immunogen.
Clonality	Polyclonal
Concentration	1 mg/ml
Observed band	82kD
Human Gene ID	3297
Human Swiss-Prot Number	Q00613

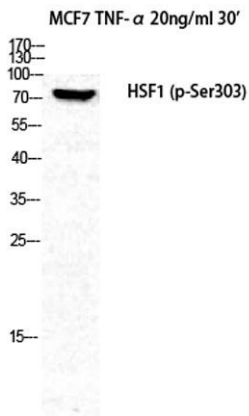




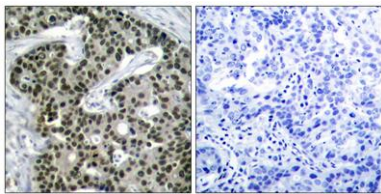
Alternative Names

Background

HSF1; HSTF1; Heat shock factor protein 1; HSF 1; Heat shock transcription factor 1; HSTF 1 heat shock transcription factor 1(HSF1) Homo sapiens The product of this gene is a transcription factor that is rapidly induced after temperature stress and binds heat shock promoter elements (HSE). This protein plays a role in the regulation of lifespan. Expression of this gene is repressed by phosphorylation, which promotes binding by heat shock protein 90. [provided by RefSeq, Aug 2016],



Western Blot analysis of MCF7+TNF cells using Phospho-HSF1 (S303) Polyclonal Antibody diluted at 1:1000

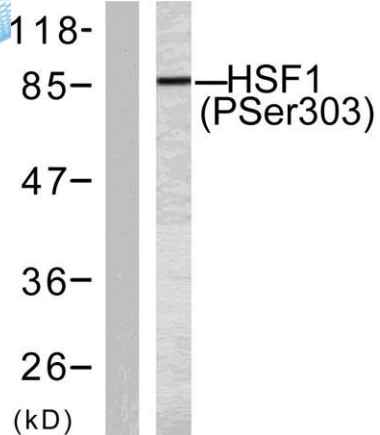


Immunohistochemistry analysis of paraffin-embedded human breast carcinoma, using HSF1 (Phospho-Ser303) Antibody. The picture on the right is blocked with the phospho peptide.





ELK Biotechnology



Western blot analysis of lysates from MCF7 cells treated with TNF-alpha 20ng/ml 30', using HSF1 (Phospho-Ser303) Antibody. The lane on the left is blocked with the phospho peptide.



+86-27-59760950

ELKbio@ELKbiotech.com

www.elkbiotech.com

23-2, No.388 Gaoxin 2nd Road,Wuhan East Lake Hi-tech Development Zone, Hubei , P.R.C