



Orexin R-1 rabbit pAb

Cat No.:ES5726

For research use only

Overview

Product Name	Orexin R-1 rabbit pAb
Host species	Rabbit
Applications	IF;ELISA
Species Cross-Reactivity	Human;Mouse;Rat
Recommended dilutions	Immunofluorescence: 1/200 - 1/1000. ELISA: 1/20000. Not yet tested in other applications.
Immunogen	The antiserum was produced against synthesized peptide derived from human HCRTR1. AA range:298-347
Specificity	Orexin R-1 Polyclonal Antibody detects endogenous levels of Orexin R-1 protein.
Formulation	Liquid in PBS containing 50% glycerol, 0.5% BSA and 0.02% sodium azide.
Storage	Store at -20°C. Avoid repeated freeze-thaw cycles.
Protein Name	Orexin receptor type 1
Gene Name	HCRTR1
Cellular localization	Cell membrane ; Multi-pass membrane protein .
Purification	The antibody was affinity-purified from rabbit antiserum by affinity-chromatography using epitope-specific immunogen.
Clonality	Polyclonal
Concentration	1 mg/ml
Observed band	
Human Gene ID	3061
Human Swiss-Prot Number	O43613
Alternative Names	HCRTR1; Orexin receptor type 1; Ox-1-R; Ox1-R; Ox1R; Hypocretin receptor type 1
Background	The protein encoded by this gene is a G-protein coupled receptor involved in the regulation of feeding behavior. The encoded protein selectively binds the hypothalamic neuropeptide orexin A. A related gene (HCRTR2) encodes a G-protein coupled receptor that binds orexin A and orexin B. [provided

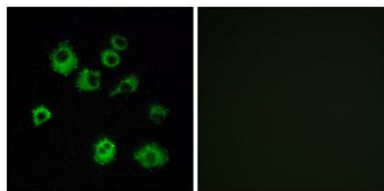




ELK Biotechnology

by RefSeq, Jan 2009],

Immunofluorescence analysis of MCF7 cells, using HCRTR1 Antibody. The picture on the right is blocked with the synthesized peptide.



+86-27-59760950

ELKbio@ELKbiotech.com

www.elkbiotech.com

23-2, No.388 Gaoxin 2nd Road,Wuhan East Lake Hi-tech Development Zone, Hubei , P.R.C